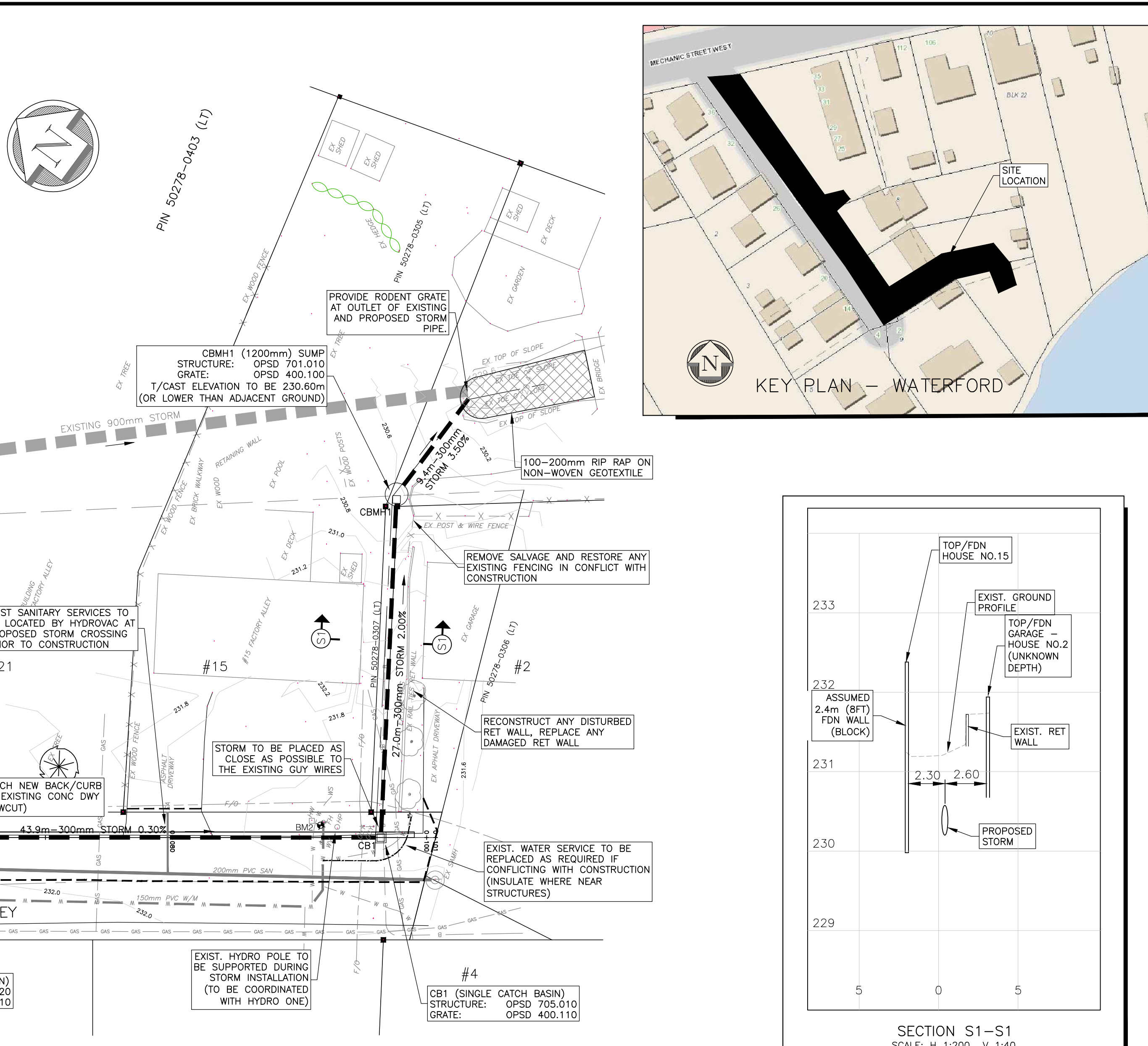


### ROAD & BOULEVARD RESTORATION

ALL DISTURBED AREAS SHALL BE RESTORED AS FOLLOWS:

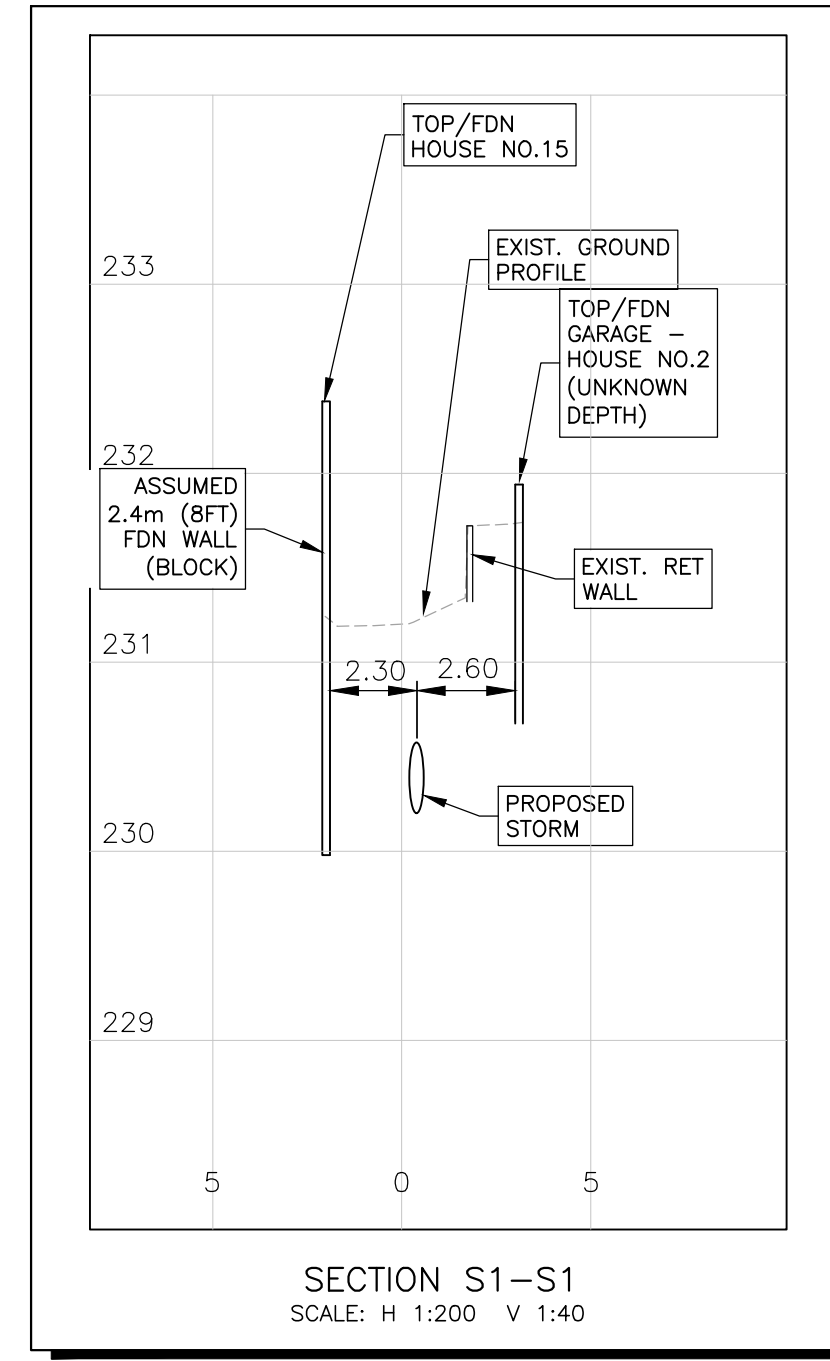
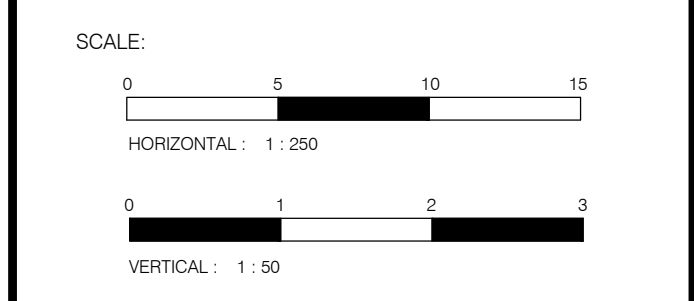
- ALL ROAD CUTS SHALL BE RESTORED WITH
  - 40mm HL3 SURFACE ASPHALT (97% MARSHALL)
  - 50mm HL8 BASE ASPHALT (97% MARSHALL)
  - 150mm GRANULAR "A" BASE (100% SPVMD)
  - 300mm GRANULAR "B" TYPE 2 SUBBASE (100% SPVMD) - GRANULAR "B" TO BE EXTENDED 0.3m BEHIND BACK OF CURB
- BOULEVARDS SHALL BE RESTORED WITH SOD OVER 100mm TOPSOIL (min) UNLESS OTHERWISE NOTED
- ASPHALT DRIVEWAYS SHALL BE RESTORED WITH 150mm OF GRANULAR "A" (100% SPVMD) WITH 50mm OF HL3 ASPHALT (97% MARSHALL)
- GRAVEL DRIVEWAYS SHALL BE RESTORED WITH 150mm OF GRANULAR "A" (100% SPVMD)
- CONCRETE DRIVEWAYS SHALL BE RESTORED WITH 150mm OF GRANULAR "A" (100% SPVMD) WITH 150mm OF CONCRETE (CLASS C2)



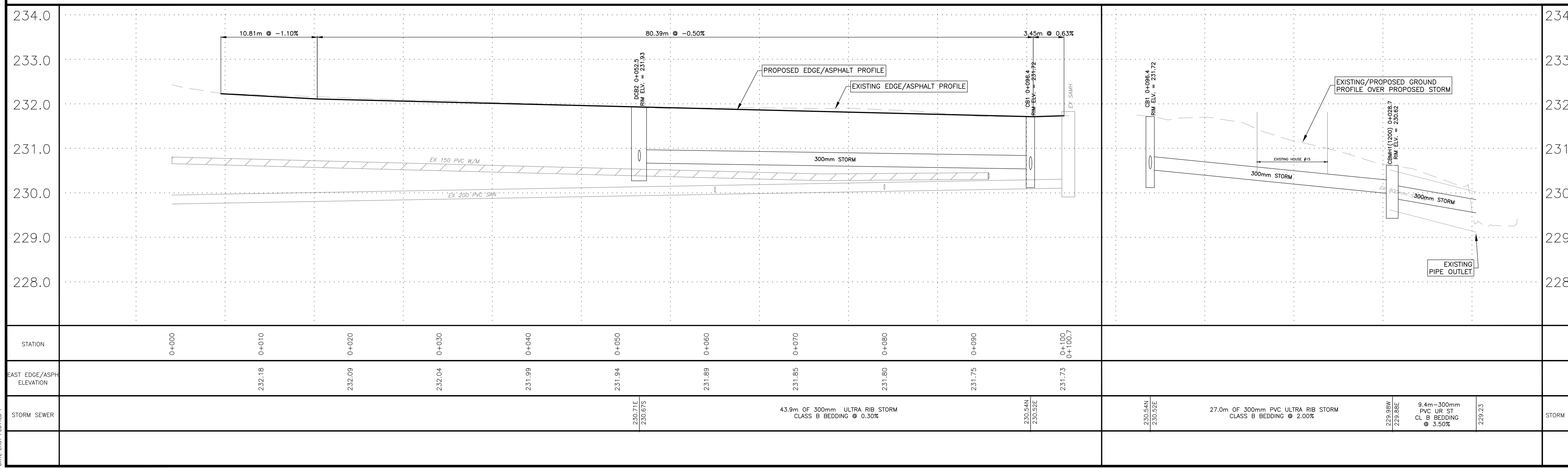
REV. NO.	DATE	REVISION
0	MAR 21, 2022	ISSUED FOR TENDER

**NOTE:**  
 THE CONTRACTOR IS CAUTIONED THAT ALL OF THE EXISTING UTILITIES ARE NOT INDICATED ON THIS DRAWING. THE CONTRACTOR MUST ARRANGE FOR LOCATES FROM EACH AREA UTILITY COMPANY PRIOR TO ANY CONSTRUCTION OR EXCAVATION. THE CONTRACTOR SHALL BE SOLELY RESPONSIBLE FOR THE PROTECTION OF ALL UTILITIES INCLUDING THOSE NOT INDICATED ON THIS DRAWING. G. DOUGLAS VALLEE LTD. CAN NOT ACCEPT RESPONSIBILITY FOR DAMAGE TO ANY EXISTING UTILITY WHICH MAY OR MAY NOT BE INDICATED ON THIS DRAWING.

**BM#1:** TWIN SPIKES IN SOUTH FACE OF HYDRO POLE; ELEV: 232.507  
**BM#2:** TOP OF MAIN OUTLET OF FIRE HYDRANT; ELEV: 232.660



## FACTORY ALLEY STORM OUTLET



**vallee**  
 Consulting Engineers,  
 Architects & Planners

**G. DOUGLAS VALLEE LIMITED**  
 2 TALBOT STREET NORTH  
 SIMCOE, ONTARIO N3Y 3W4  
 (519) 426-6270

LICENSED PROFESSIONAL ENGINEER  
**T. G. SMITH**  
 3/24/2022  
 18064  
 PROVINCE OF ONTARIO

Project Title  
**FACTORY ALLEY**  
**STORM OUTLET**  
**WATERFORD - NORFOLK COUNTY**

Drawing Title  
**STORM OUTLET - PLAN AND PROFILE**

Designed by: TGS  
 Drawn By: DJB

Checked by: TGS  
 Date Started:

Drawing Scale: 1:250  
 Drawing No:

Project No.  
**18-064**

STORM SEWER	230.1E 230.075	43.9m of 300mm ULTRA RIB STORM CLASS B BEDDING @ 0.30%	230.54E 230.52E	27.0m of 300mm PVC ULTRA RIB STORM CLASS B BEDDING @ 2.00%	230.98W 230.89E	9.4m - 300mm PVC UR ST CL B BEDDING @ 3.50%	229.23
-------------	-------------------	--	--------------------	--	--------------------	---	--------