

NO	ROOM NAME	MAT.	WALLS				FLOOR		CEILING	CLG. HEIGHT	CLG. FIRE RATING	REMARKS
			NORTH	EAST	SOUTH	WEST	FIELD	BASE				
01	MAH. AUDITORIUM	DIV	DIV	DIV	DIV	VCT	W	ATI	12'-0"		WAINSCOTTING ON ALL THE WALLS SP #1 - SEE SD-2 #10	
		FIN.	P	P	P	—	P	P	8'-0"			
02	MEETING ROOM	DIV	—	—	DIV	VCT	W	ATI	9'-0"		P.I.P.O.	
		FIN.	P	—	—	—	P	P	8'-0"			
03	MEETING ROOM	DIV	DIV	—	—	VCT	W	ATI	10'-0"		P.I.P.O.	
		FIN.	P	P	—	—	P	P	10'-0"			
04	STORAGE	DIV	DIV	DIV	DIV	VCT	R	ATI	7'-6"			
		FIN.	P	P	P	—	—	—	7'-6"			
05	CLOAK ROOM	DIV	DIV	DIV	DIV	VCT	R	ATI	8'-0"			
		FIN.	P	P	P	—	—	—	8'-0"			
06	POLICE OFFICE	DIV	DIV	DIV	DIV	VCT	W	ATI	8'-0"			
		FIN.	P	P	P	—	P	—	8'-0"			
07	LOBBY	DIV	—	DIV	DIV	VCT	W	DV	9'-0"		WAINSCOTTING ON ALL THE WALLS SP #1 - SEE AD-2 #10	
		FIN.	P	—	P	—	P	P	8'-0"			
08	VESTIBULE	DIV	—	DIV	—	VCT	W	W	8'-0"		WAINSCOTTING ON ALL THE WALLS - SP #1 - SEE SD-2 #10	
		FIN.	P	—	P	—	P	STAIN	8'-0"			

- | | | | | |
|---------------------|-----------------------|-------------------|--------------------|-----------------------------|
| AL ALUMINUM | CAR CARPET | HM HOLLOW METAL | PL PLASTER | T TERRAZZO |
| ATI A.T.I. | CB CONCRETE BLOCK | L LINOLEUM | PLY PLYWOOD | TS TEXTURED SURFACE |
| AT2 ACOUSTIC TILE | CET CERAMIC TILE | LM LINEAR METAL | PT PRECAST | V VINYL SHEET FLOORING |
| AT3 | CWF CEMENT WOOD FIBRE | M METAL | TERRAZZO | VCT VINYL COMPOSIT-ION TILE |
| B BRICK | DW DRYWALL | MIR MIRROR | QT QUARRY TILE | VT VINYL TILE |
| BE BAKED ENAMEL | EP EPOXY | MAR MARBLE | R RUBBER | W WOOD |
| BH BUSH HAMMER | EX EXISTING | P PAINT | S STONE | WC WALL COVERING |
| C CONCRETE | EXP EXPOSED | PAV PAVERS | SB SAND BLAST | WS WAINSCOTTING |
| (H) HARDENED CONC. | GL GLASS | PB PARTICLE BOARD | SC SPECIAL COATING | |
| (S) SEALED CONCRETE | GR GRANITE | PC PRECAST CONC | SV STAIN & VARNISH | |

A. VENTIN ARCHITECT

ROOM FINISH SCHEDULE

REVISION
JAN 17, 94.

PAGE No. 2 of 2
JOB No. 93029

ROOM NO.	NAME		WALLS				FLOOR		CLG.	CLG. HEIGHT	CLG. FIRE RATING	REMARKS
			NORTH	EAST	SOUTH	WEST	FIELD	BASE				
09	WASHROOM (FEMALE)	MAT.	DV	DV	DV	DV	V.	R	AT ₁	8'-0"	—	
		FIN.	P	P	P	P	—	—	—			
10	WASHROOM (MALE)	MAT.	DV	DV	DV	DV	V	R	AT ₁	8'-0"	—	
		FIN.	P	P	P	P	—	—	—			
11	WASH TOILET ROOM	MAT.	DV	DV	DV	DV	V	R	AT ₁	8'-0"	45 MIN 1/2 of trusses	
		FIN.	P	P	P	P	—	—	—			
12	WASHROOM (STAFF)	MAT.	DV	DV	DV	DV	V	R	AT ₁	8'-0"	—	
		FIN.	P	P	P	P	—	—	—			
13	KITCHEN	MAT.	DV	DV	DV	DV	VCT	R	AT ₂	8'-4"	—	
		FIN.	P	P	P	P	—	—	—			
14	BAR	MAT.	DV	DV	DV	DV	VCT	R	AT ₁	8'-0"	—	
		FIN.	P	P	P	P	—	—	—			
15	STORAGE	MAT.	DV	DV	DV	DV	VCT	R	DV	9'-0"	—	
		FIN.	P	P	P	P	—	—	P			
16	MECHANICAL ROOM	MAT.	DV	DV	DV	DV	C(S)	—	DV	9'-0"	1 HR.	
		FIN.	—	—	—	—	—	—	—			
17	MECHANICAL ROOM	MAT.	DV	DV	DV	DV	C(S)	—	DV	14'-0"	—	
		FIN.	—	—	—	—	—	—	—			
		MAT.										
		FIN.										

ALL BASES TO BE 4" HIGH.

BULKHEADS, WALL ABOVE OPENING ETC TO BE SAME FINISH AS OTHER WALLS IN THE ROOM

C.A. VENTIN ARCHITECT

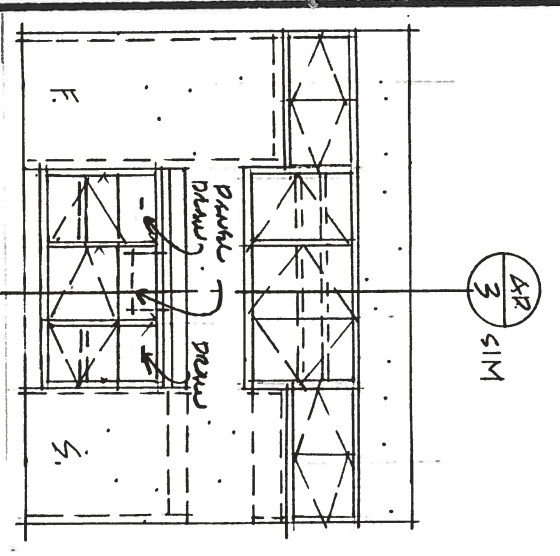
DOOR AND FRAME SCHEDULE

REVISION
J&N 17.94

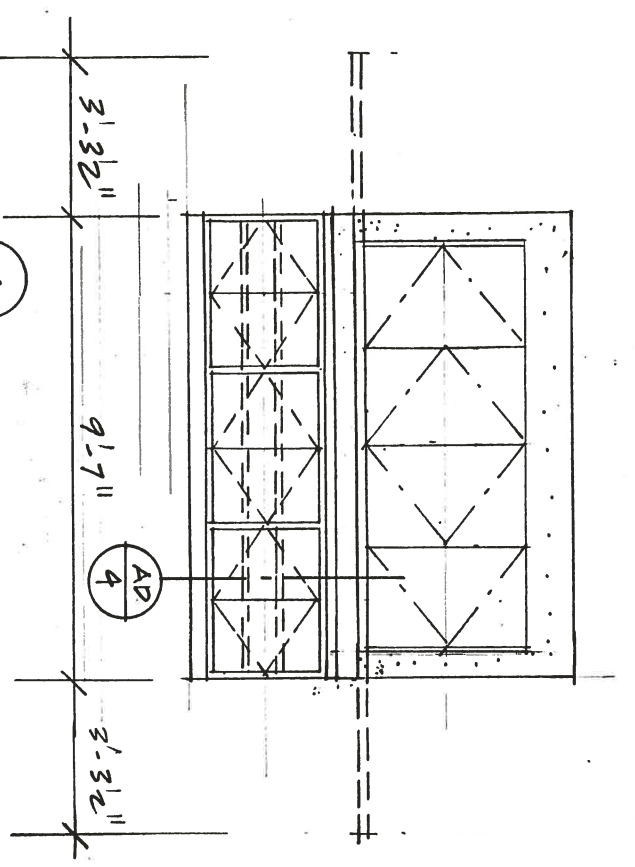
PAGE NO. 1 of 2
JOB NO. 93029

NO.	DOOR				FRAME						LABEL CLASS	GLASS	THRES HOLD	REMARKS
	TYPE	SIZE	MAT.	FIN.	TYPE	MAT.	FIN.	JAMB	HEAD	DEPTH				
1	A.	2-3'-0" x 7'-0" x 1 3/4"	AL	AN	SHIMMED	AL	AN	1 3/4"	1 3/4"	4 1/2"		HS	AL	SEE SCREEN.
2	A	2-3'-0" x 7'-0" x 1 3/4"	AL	AN	1	AL	AN	1 3/4"	1 3/4"	4 1/2"		T		SEE SCREEN.
3	B	3'-0" x 7'-0" x 1 3/4"	WI	P	2	HM	P	2"	2"	5 3/4"				
4	B	3'-0" x 7'-0" x 1 3/4"	WI	P	2	HM	P	2"	2"	5 3/4"				
5	B	3'-0" x 7'-0" x 1 3/4"	WI	P	2	HM	P	2"	2"	5 3/4"				
6	B	3'-0" x 7'-0" x 1 3/4"	WI	P	2	HM	P	2"	2"	5 3/4"				
7	B	3'-0" x 7'-0" x 1 3/4"	WI	P	2	HM	P	2"	2"	5 3/4"	45 MIN			
8	C	3'-0" x 7'-0" x 1 3/4"	WI	P	2	HM	P	2"	2"	7 3/4"		T		
9	C	3'-0" x 7'-0" x 1 3/4"	WI	P	2	HM	P	2"	2"	7 3/4"		T		
10	B	3'-0" x 7'-0" x 1 3/4"	WI	P	2	HM	P	2"	2"	7 3/4"				
11	B	3'-0" x 7'-0" x 1 3/4"	WI	P	2	HM	P	2"	2"	5 3/4"				
12	D	2-3'-0/2'-0" x 7'-0" x 1 3/4"	HM	P	3	HM	P	2"	9"	6 3/4"			AL	ALT. PRICED TO BE 2'-0" x 7' x 1 3/4"
13	D	2-3'-0/2'-0" x 7'-0" x 1 3/4"	HM	P	3	HM	P	2"	9"	6 3/4"			AL	
14	B	2-3'-0" x 7'-0" x 1 3/4"	HM	P	3	HM	P	2"	9"	6 3/4"			AL	
15	B	3'-0" x 7'-0" x 1 3/4"	HM	P	3	HM	P	2"	9"	6 3/4"			AL	
16	B	3'-0" x 7'-0" x 1 3/4"	WI	P	2	HM	P	2"	2"	5 3/4"				
17	F	3'-0" x 7'-0" x 1 3/4"	HM	P	3	HM	P	2"	9"	6 3/4"		HS	AL	SEE SCREEN.
18	B	3'-0" x 7'-0" x 1 3/4"	HM	P	2	HM	P	2"	2"	5 3/4"	45 MIN			
19	F	3'-0" x 7'-0" x 1 3/4"	HM	P	2	HM	P	2"	2"	7 3/4"		T		
20	F	2-3'-0" x 7'-0" x 1 3/4"	HM	P	2	HM	P	2"	2"	7 3/4"		T		

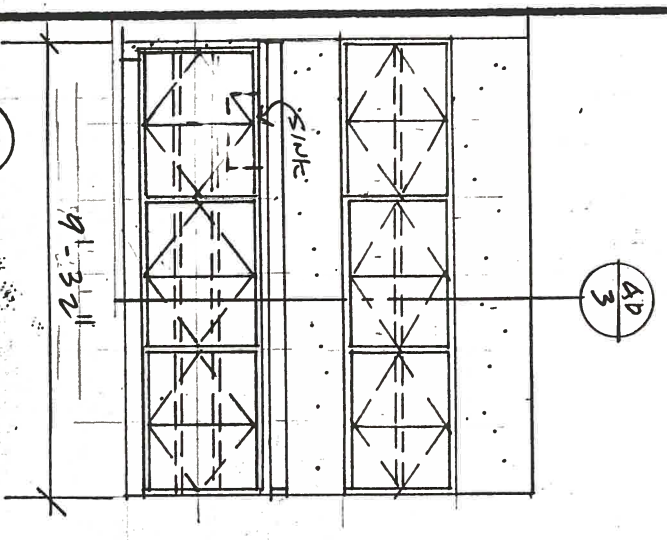
AL ALUMINUM	HB HARDBOARD	PL PLASTIC LAMINATE	TB THERMAL BROKEN	W3 WOOD PANEL
AN CLEAR ANODIZED	HM HOLLOW METAL	SS STAINLESS	T TEMPERED	W WOOD
AN(C) COLOUR ANODIZED	INS INSULATED	ST STEEL	WI SOLID CORE WOOD	
GW GEORGIAN WIRED	P PAINT	SV STAIN & VARNISH	W2 HOLLOW CORE WOOD	



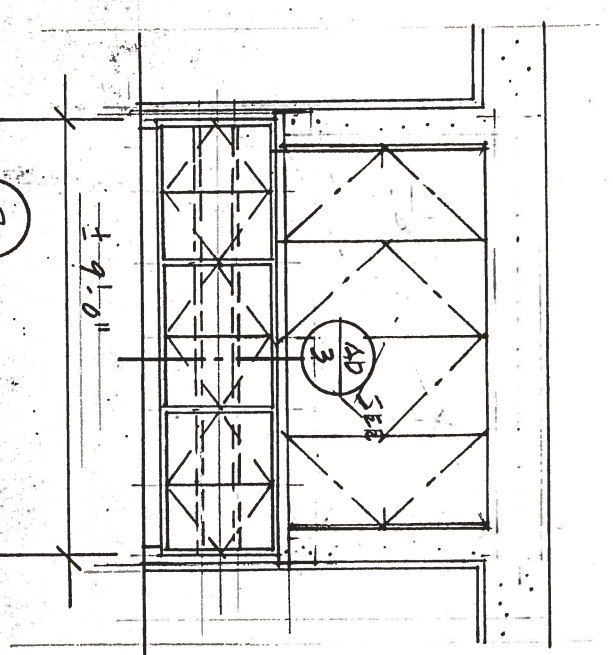
1 MEETING ROOM
003 S.P.#2



2 BAR 014



4 KITCHEN 013
S.P.#2



3 KITCHEN 013

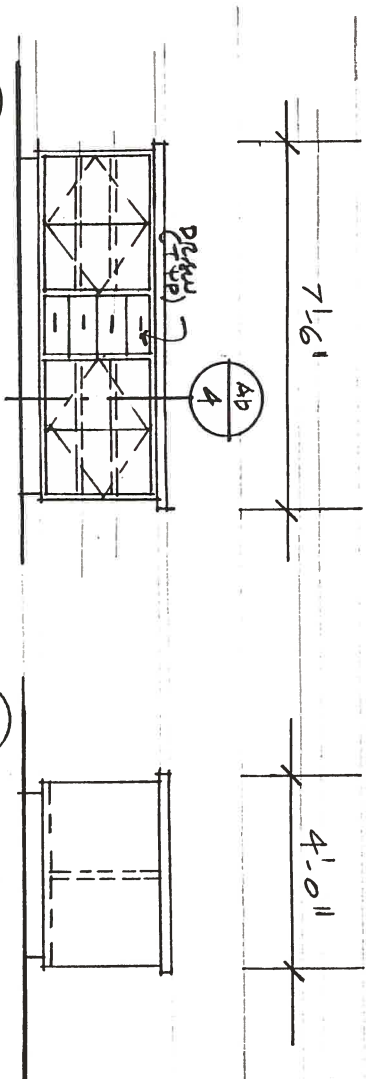
MILWORK,
ELEV. ① ② ③ ④

Project No. 93025.
Scale 1/4" = 1'-0"

COVERLAND COMMUNITY CENTER
C.A. VENTIN ARCHITECT LTD.
Simcoe · Toronto · Cambridge · Guelph

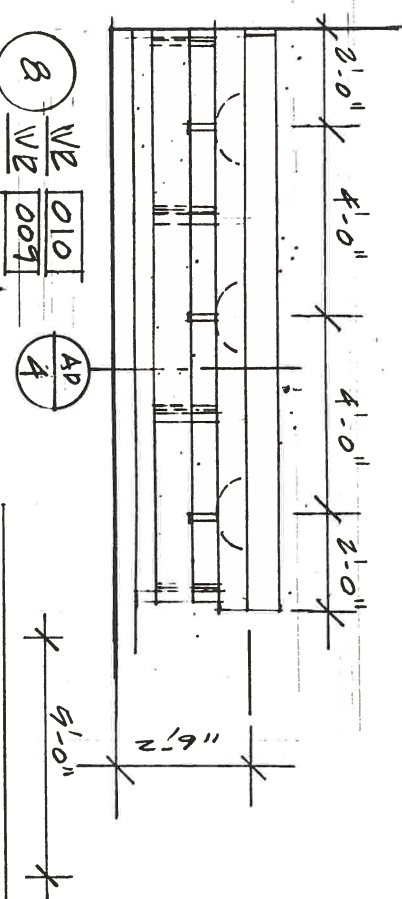
Date JAN 4, 93.
Revision JAN 17, 94

Drawing No. AD 1

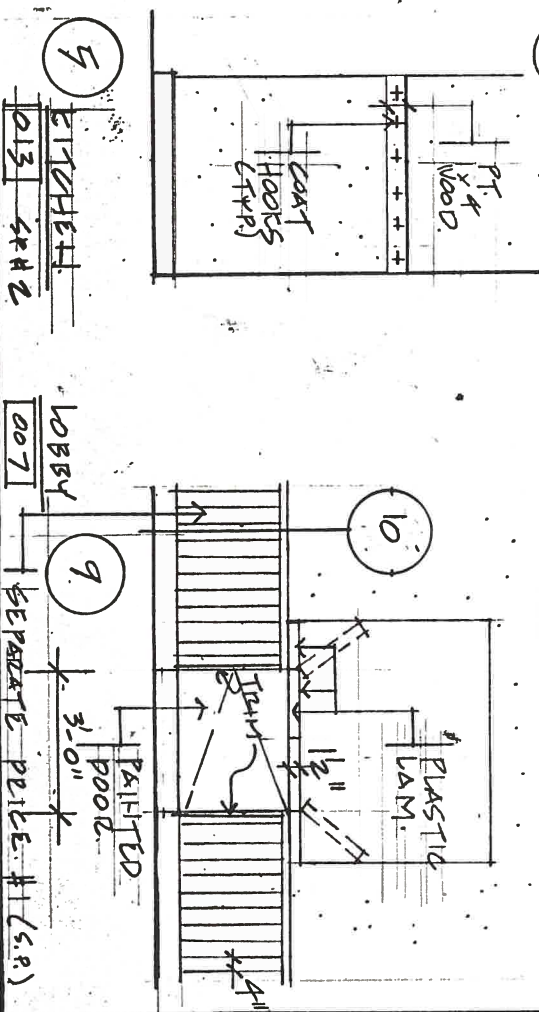


6 BOTH SIDES SP #2
KITCHEN 013

7 BOTH SIDES
KITCHEN 013



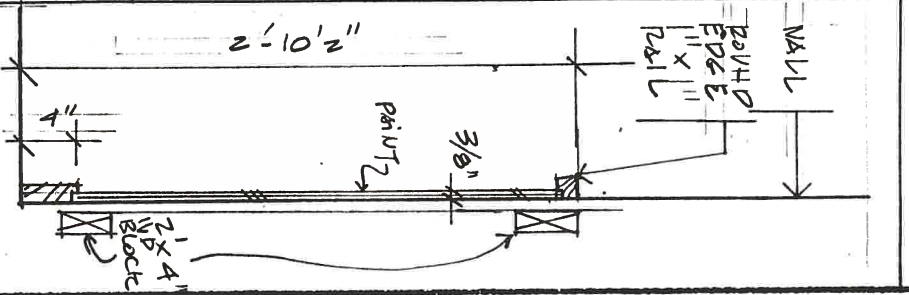
8 VE 010
VE 009
AD 4



5 KITCHEN 013
SP #2

9 LOBBY 007
SEPARATE PRILE # (S.R.)

10 WASHROOMS



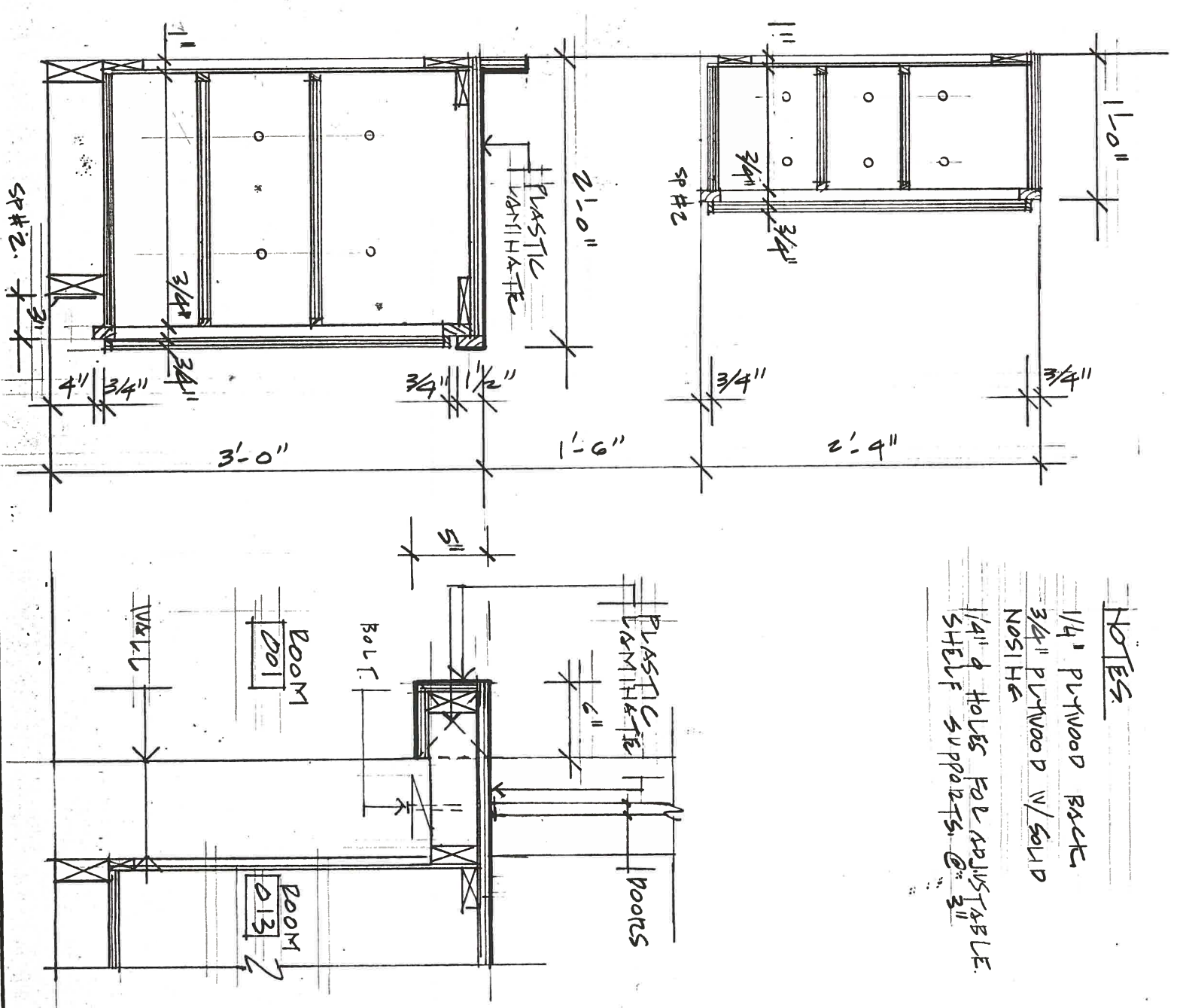
11 WASHROOMS

MILLWORK,
ELEV 5 6 7 8 9

Project No. 93025.
Scale 1/4" = 1'-0", 1/2" = 1'-0"

COVERLAMP COMMUNITY CENTER		Date	JAN 4.93.	Drawing No.	AD 2
C.A. VENTIN ARCHITECT LTD.		Revision			
Simcoe-Toronto-Cambridge-Guelph					

NOTES
 1/4" PLYWOOD BACK.
 3/4" PLYWOOD W/ SOLID
 NOSHS
 1/4" Ø HOLES FOR ADJUSTABLE
 SHELF SUPPORTS @ 3"

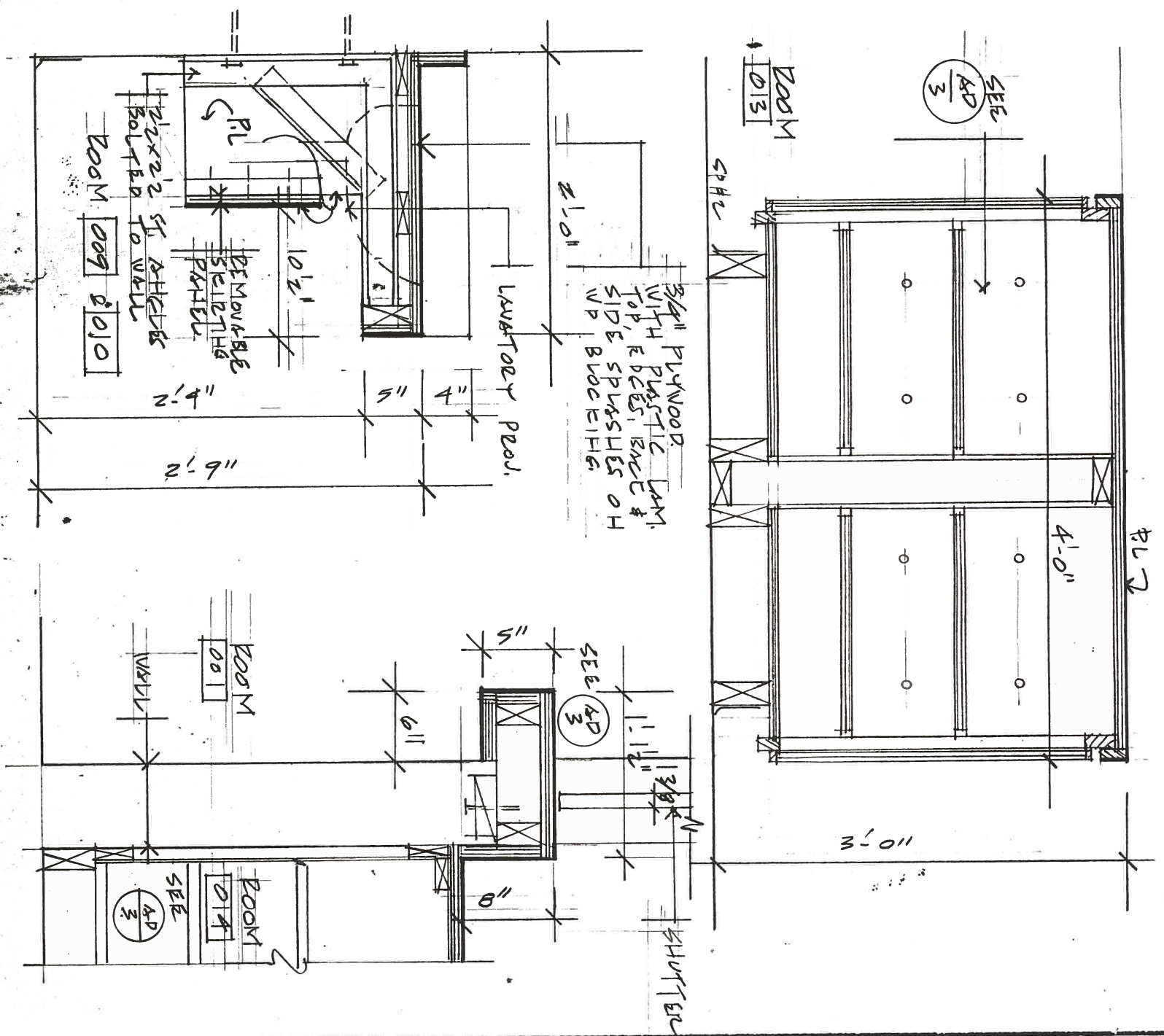


MILLWORKS
 CABINET SECTION

Project No
 93025

Scale
 1/8" = 1'-0"

COVERLAND COMMUNITY CENTER		Date	UAH 4.93.	Drawing No.	AD
C.A. VENTIN ARCHITECT LTD.		Revision			3
Simcoe · Toronto · Cambridge · Guelph					

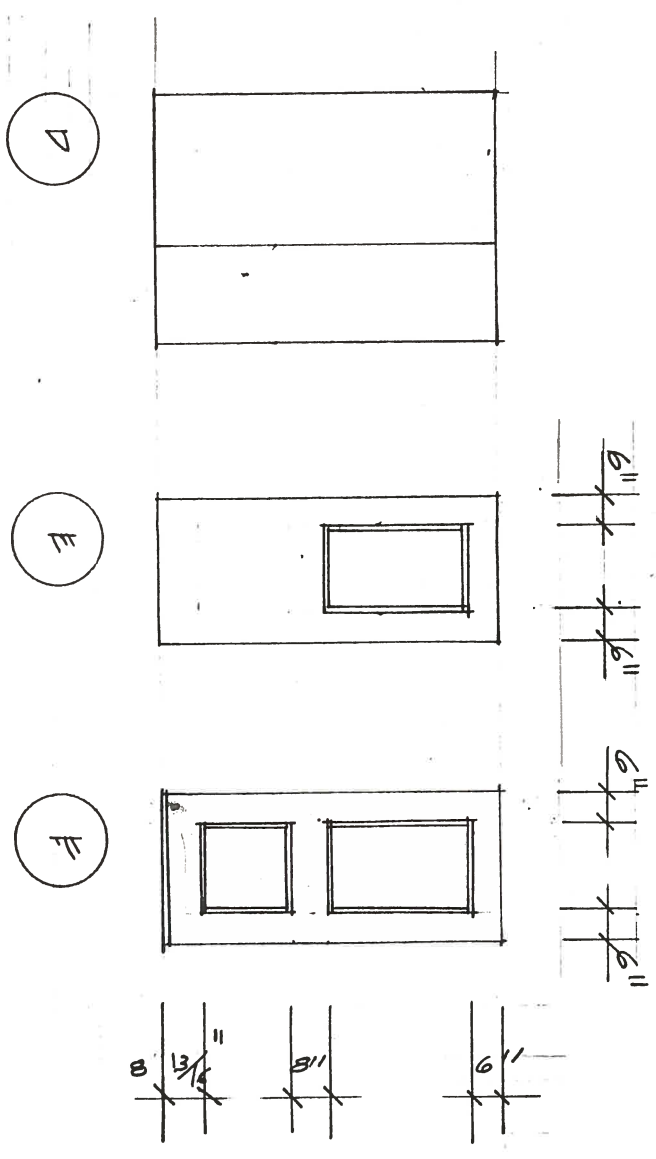
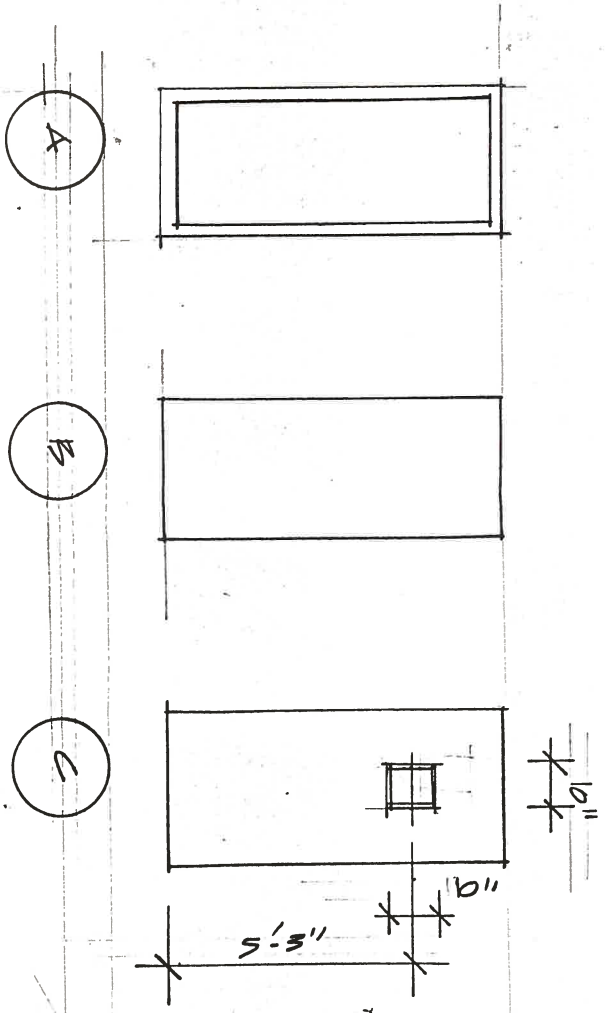


MILLWORK,
CABINET SECTION,
COUNTERTOP SECTION.

Project No. 93025.
Scale

C.A. VENTIN ARCHITECT LTD. Simcoe · Toronto · Cambridge · Guelph	Date	JAN 4. 93.	Drawing No. AD 4
	Revision		

COVERLAP COMMUNITY CENTER



Door Types.

Project No
93025.

Scale
1/4" = 1'-0"

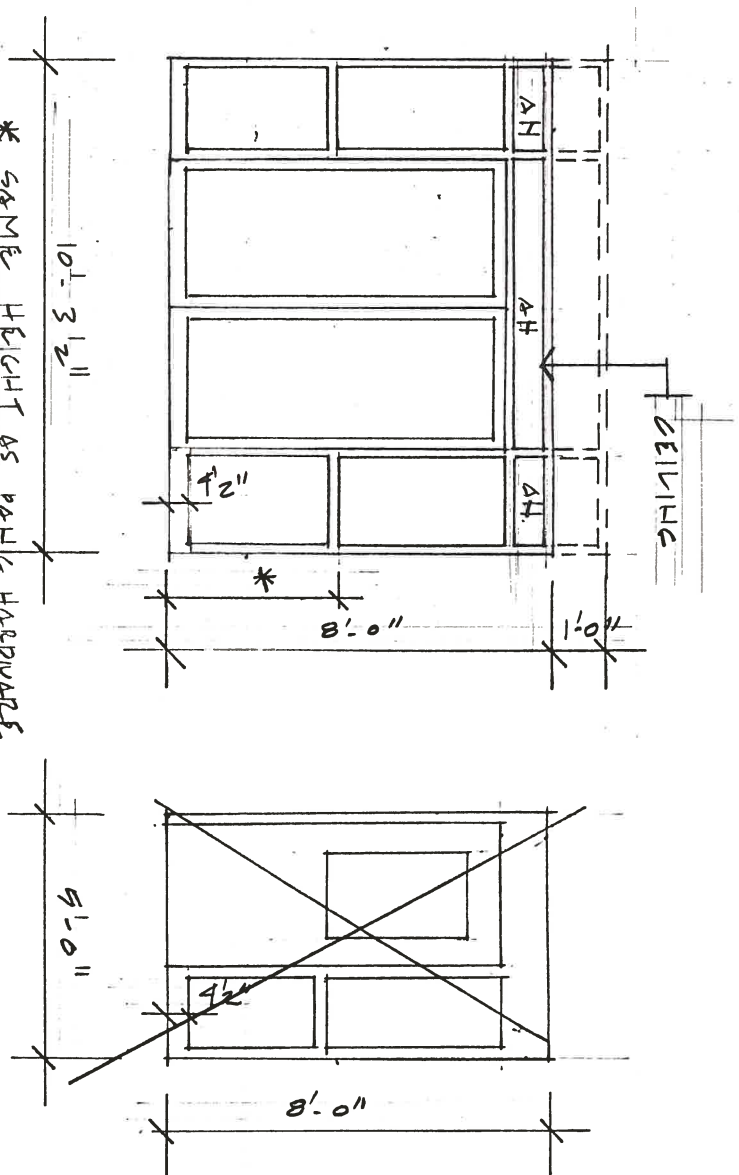
CONVERTED
COMMUNITY CENTRE

Date
DEC 30.93

C.A. VENTIN ARCHITECT LTD.
Simcoe · Toronto · Cambridge · Guelph

Revision

Drawing No
AD
5

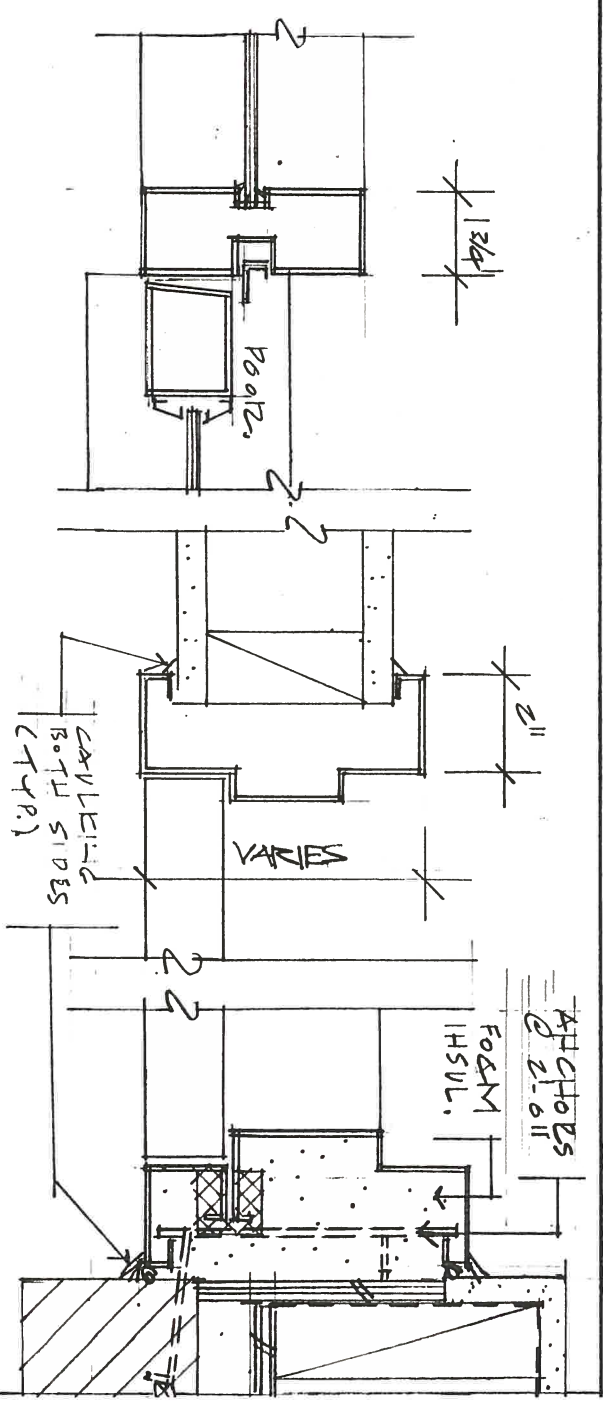


* SAME HEIGHT AS PAUL HARDWARE
SCREEN DOORS

1 & 2

SCREEN DOOR (7)

SCALE 1/4" = 1'-0"



1

2

3

SCALE 1/4" = 1'-0"

SCREEN FRAMES TYPES

Project No 93025

Scale AS 3/4" = 0'-0"

SOVRELAND COMMUNITY CENTRE

Date DEC 30, 93

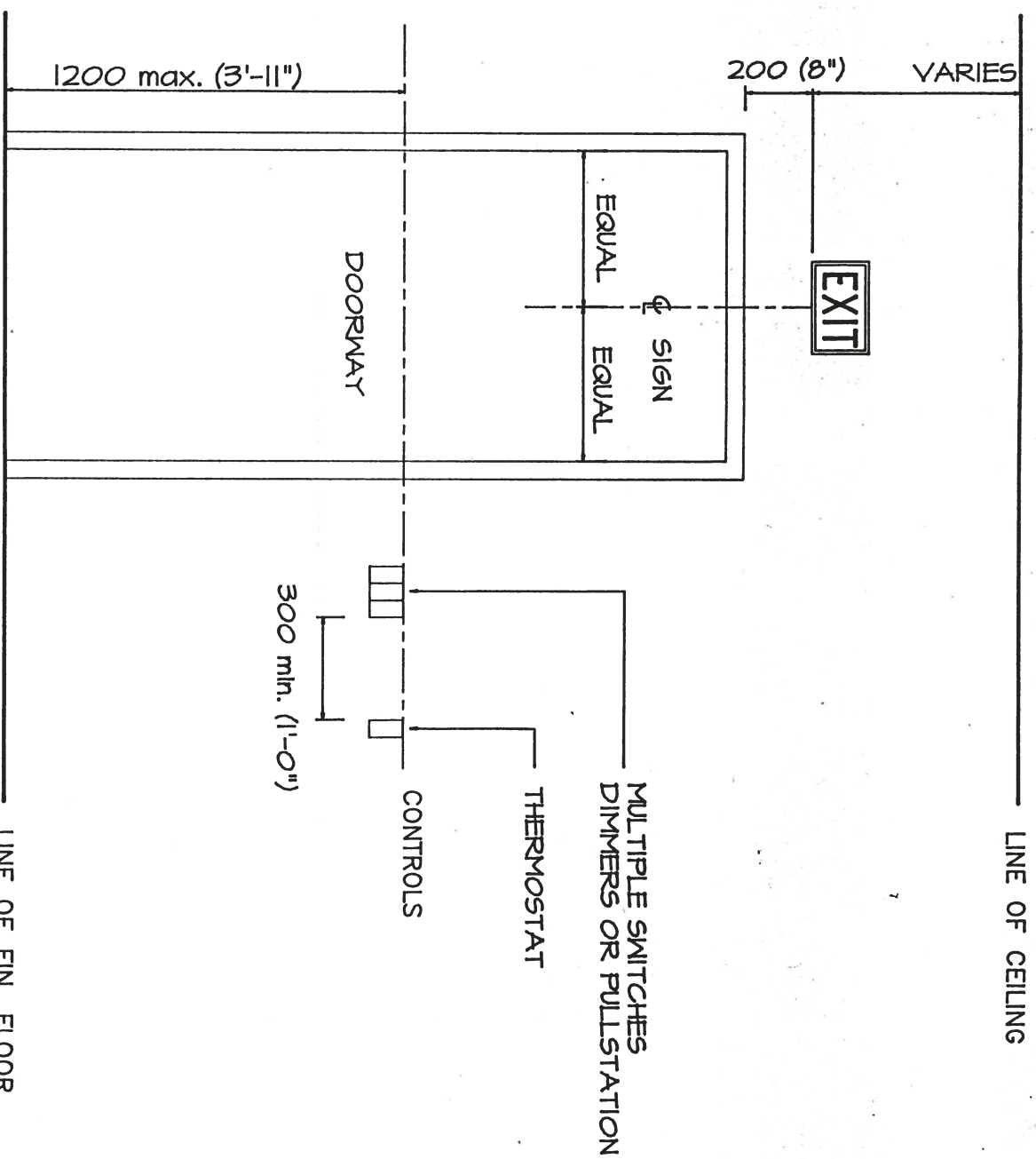
Drawing No 1

C.A. VENTIN ARCHITECT LTD.

Revision

Simcoe-Toronto-Cambridge-Guelph

AS 6



GENERAL NOTE:
 ANY DEVIATIONS FROM STANDARD DETAIL DUE TO SITE CONDITIONS TO BE VERIFIED WITH ARCHITECT ON SITE PRIOR TO INSTALLATION OF ROUGH WIRING
 ALL RECESSED EQUIPMENT TO BE LOCATED TO MATCH MASONRY COURSE HEIGHT
 VERIFY EQUIPMENT SIZE FOR INSTALLATION HEIGHT
 MAX. HEIGHT OF OPERATING CONTROLS OF EQUIPMENT TO COMPLY WITH MOST RECENT O.B.C. SECTION 3.7.15

EXIT SIGN AND ELECT. EQUIP. LOCATIONS -TYP.-		Project No.	93024
Scale		1 : 20	
Date		JAN. 19, 93	
Revision			
C. A. VENTIN ARCHITECT LTD.		Dwg. No.	
Simcoe - Toronto - Cambridge		AD 7	