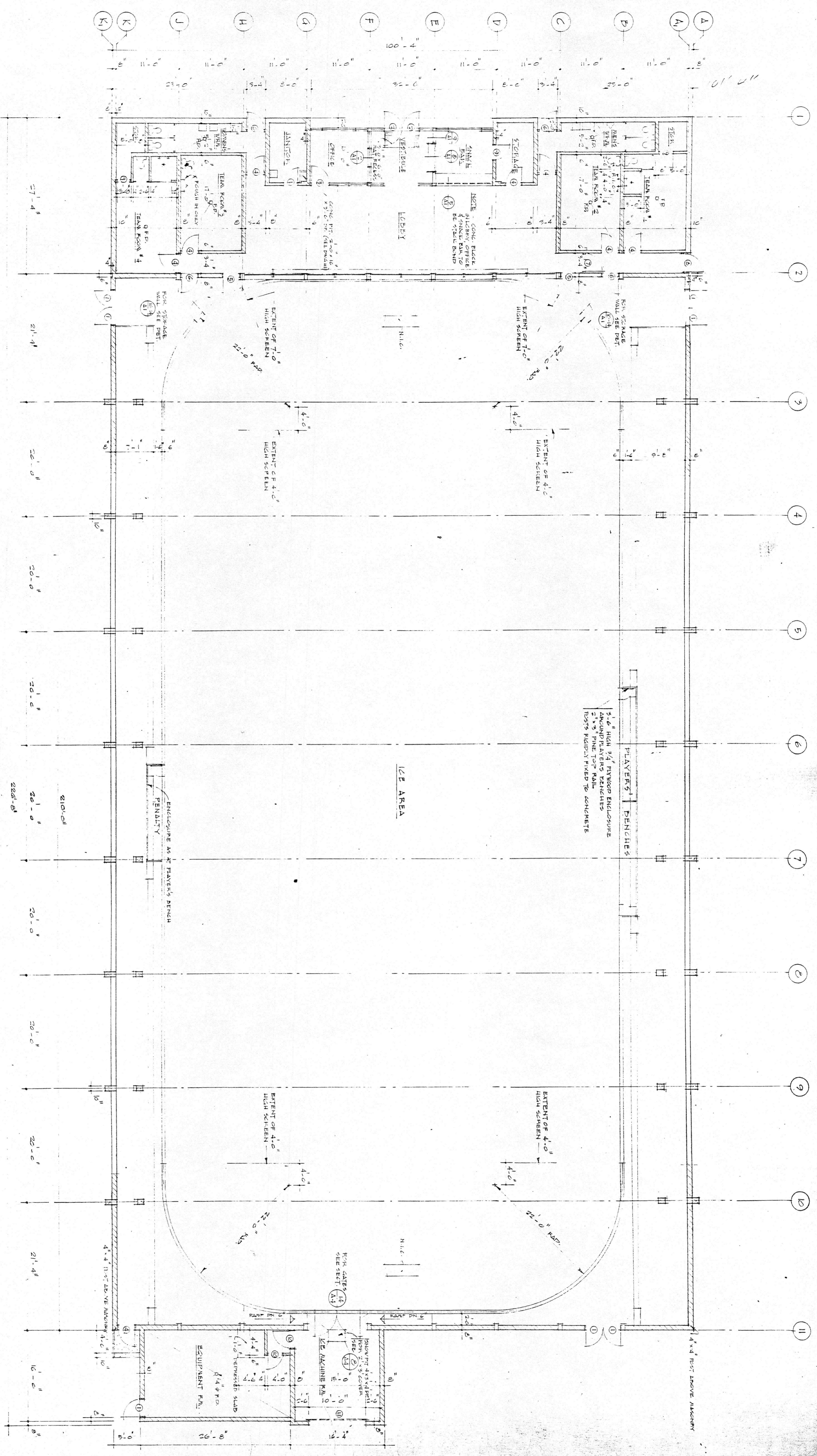


TRICENTURENA ARENA, WATERFORD, ONTARIO.



TOWNSHIP OF TOWNSEND
 TOWN OF Waterford

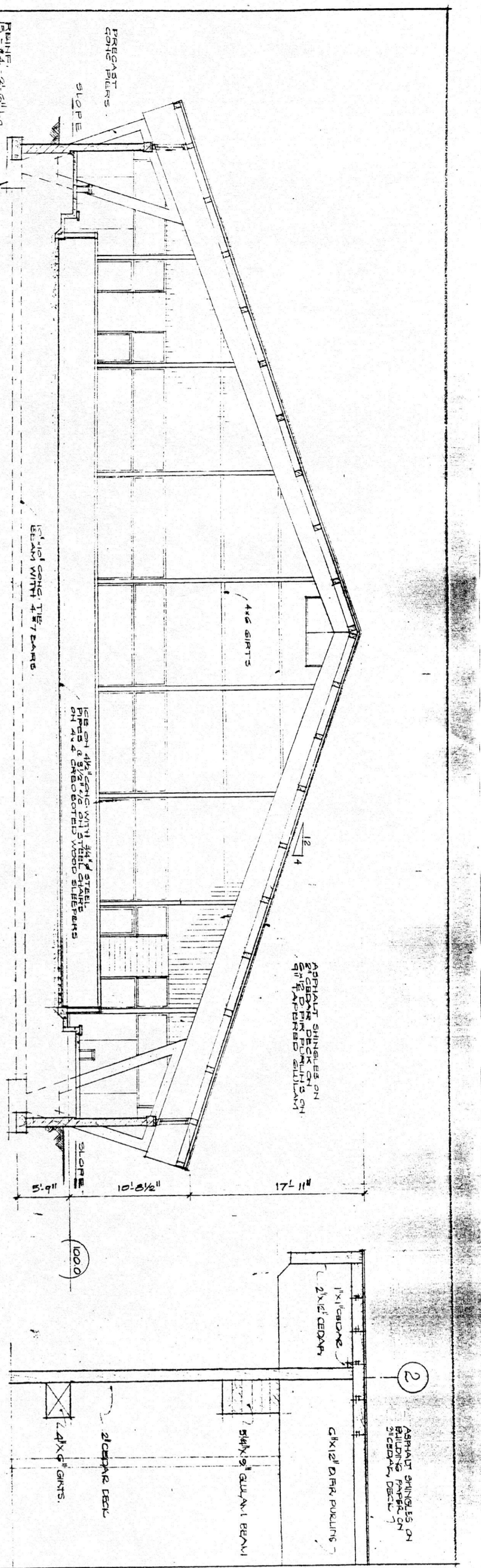
SHUFFLEBURN & ASSOCIATES LTD.
 CONSULTING ARCHITECTS
 34 BRIDGE ST. TORONTO, ONTARIO
 WATERLOO

FLOOR PLAN

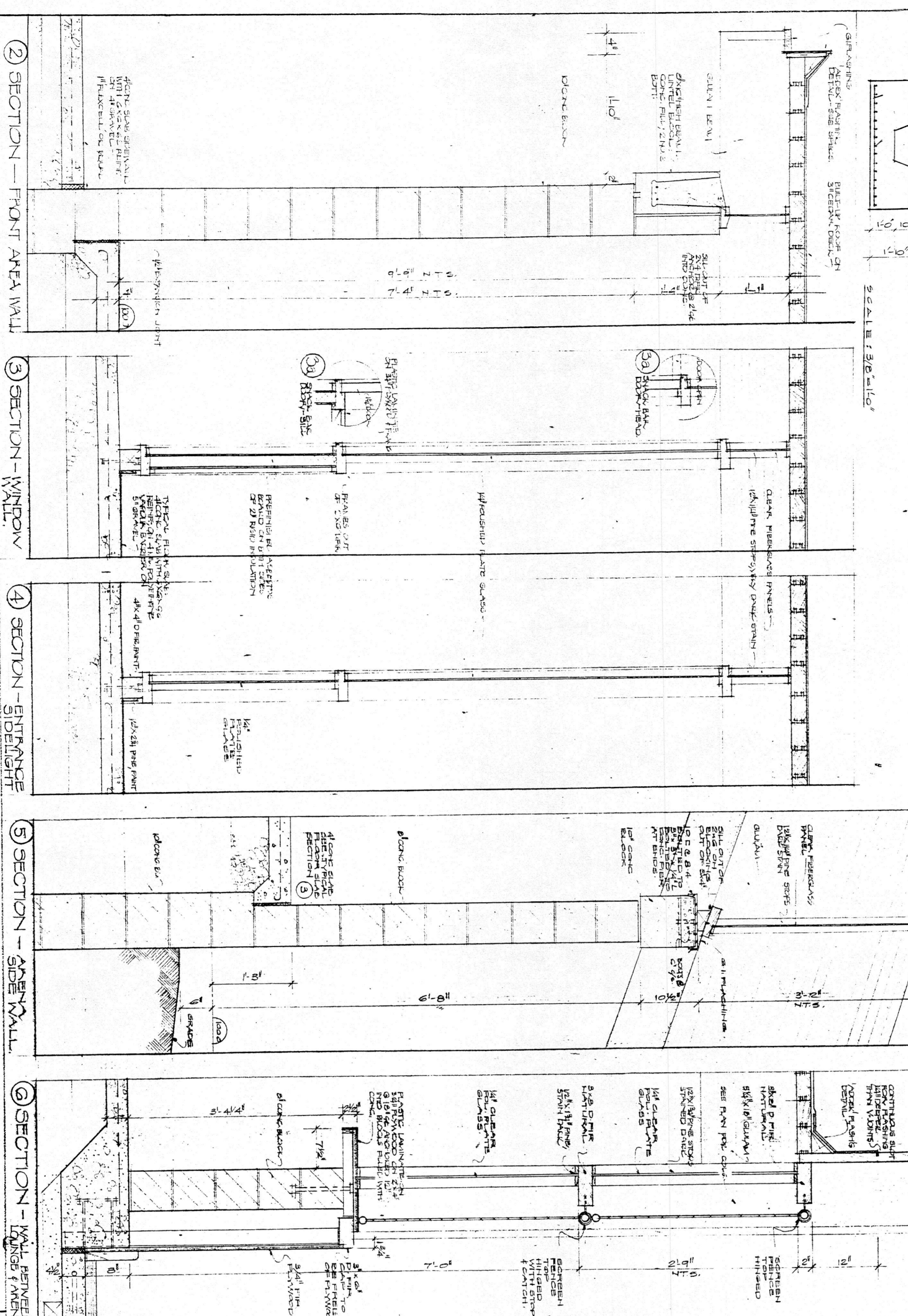
DATE	SCALE	DESIGNED BY	DWG. NO.
1972	1/8" = 1'-0"	J.S.	101

NO.	REVISION
1	ISSUED FOR PERMIT

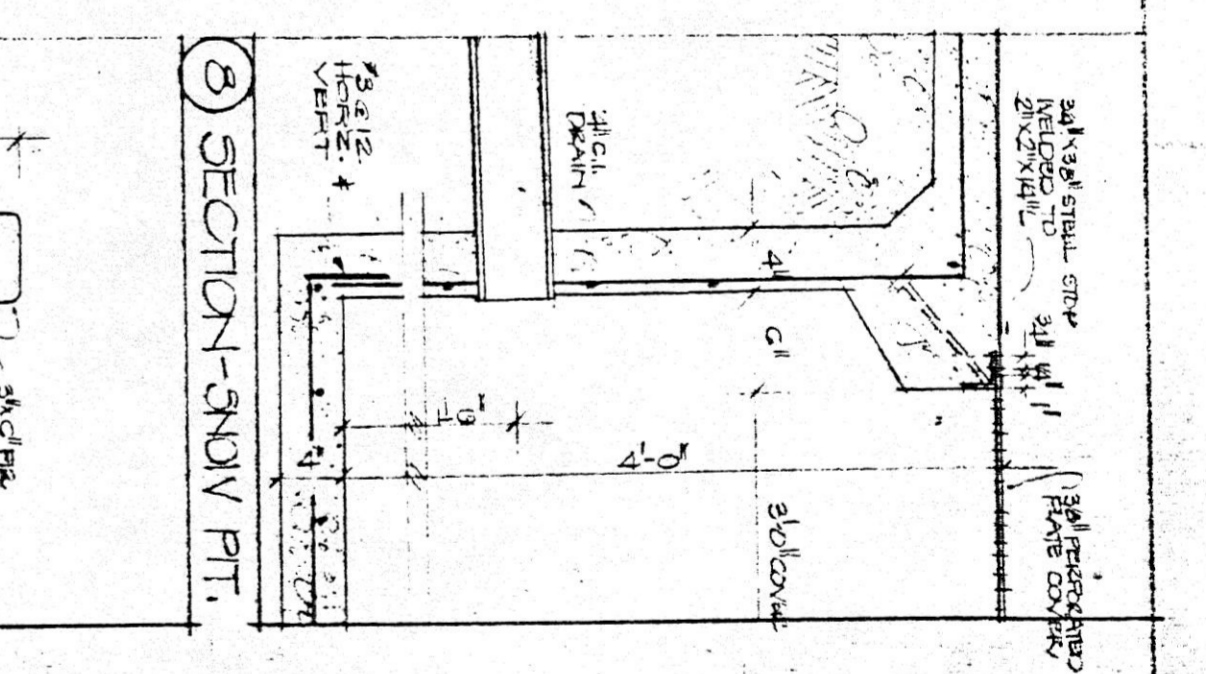




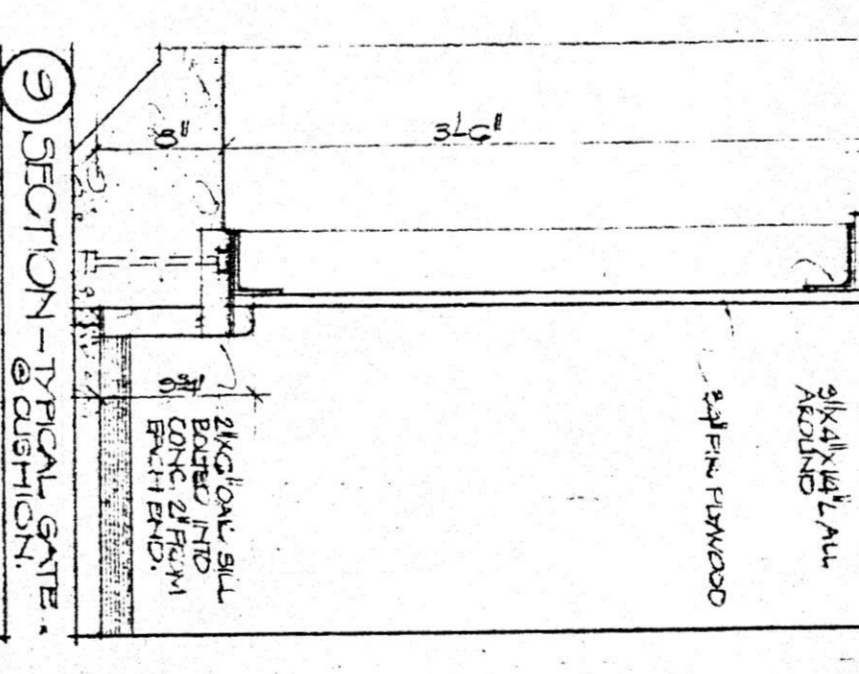
① CROSS-SECTION
SCALE 1/8" = 1'-0"



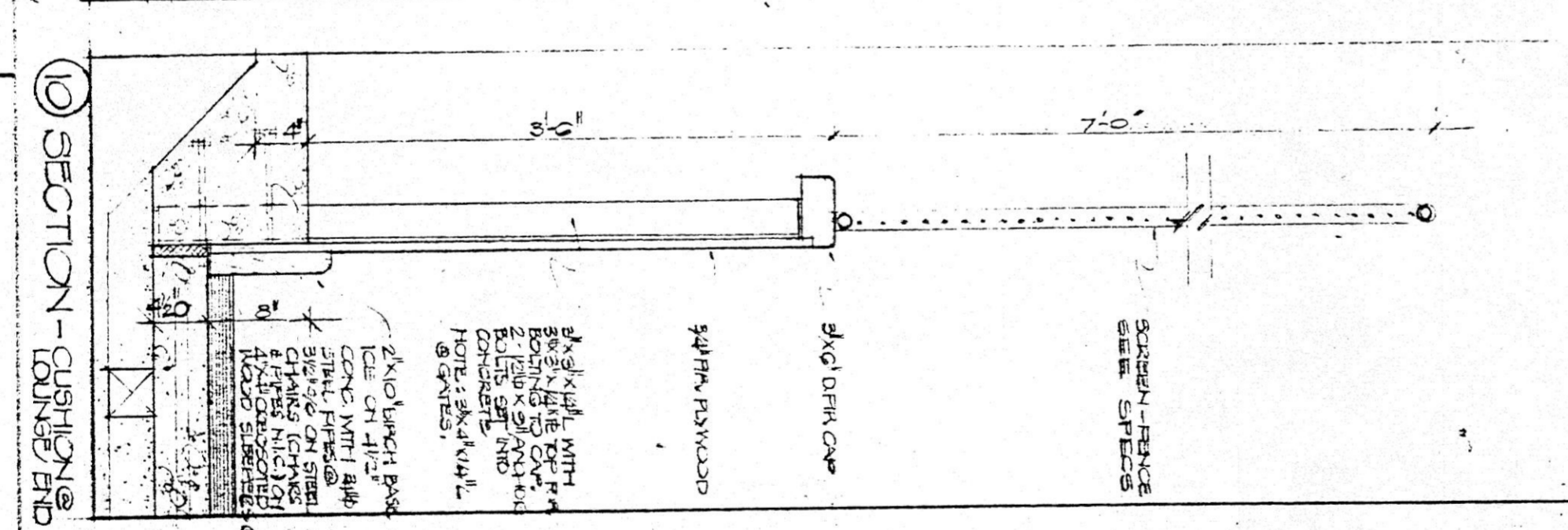
② SECTION - FRONT AREA WALL
③ SECTION - WINDOW
④ SECTION - WINDOW
⑤ SECTION - WINDOW
⑥ SECTION - WINDOW



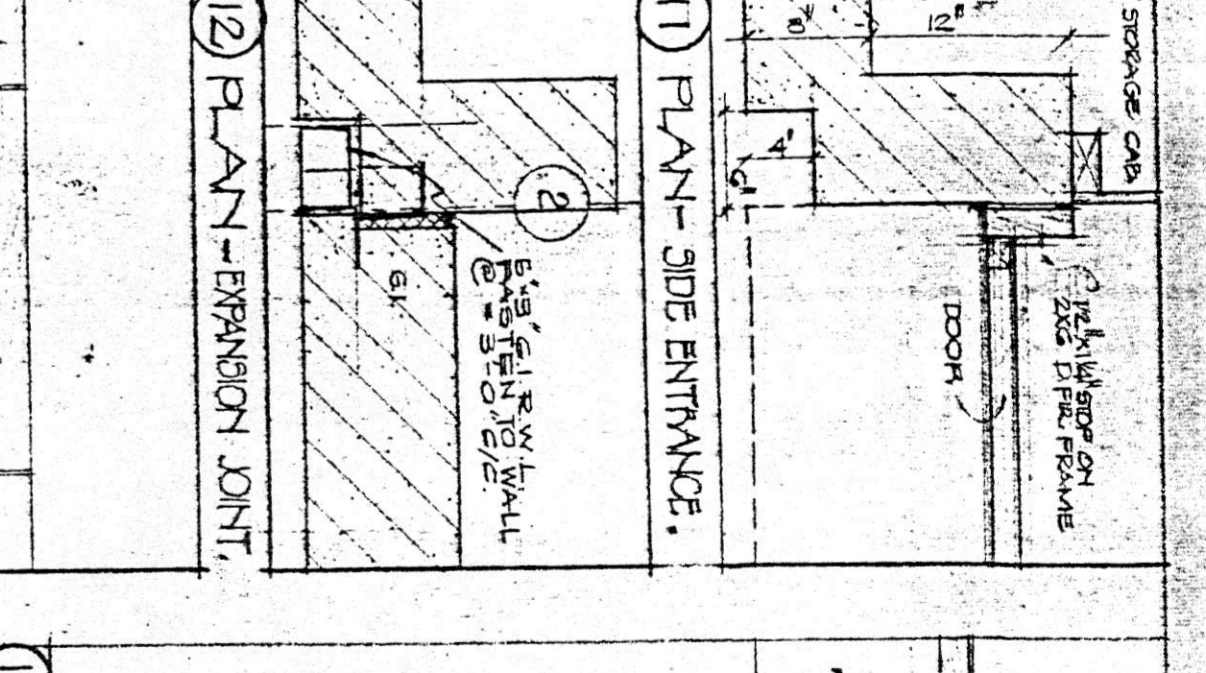
⑦ SECTION - WINDOW



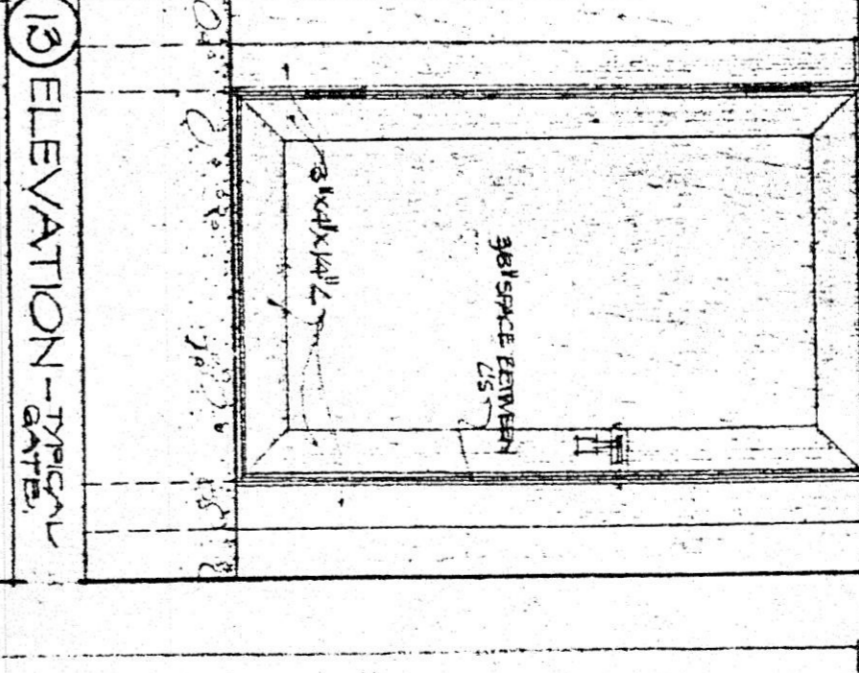
⑧ SECTION - WINDOW



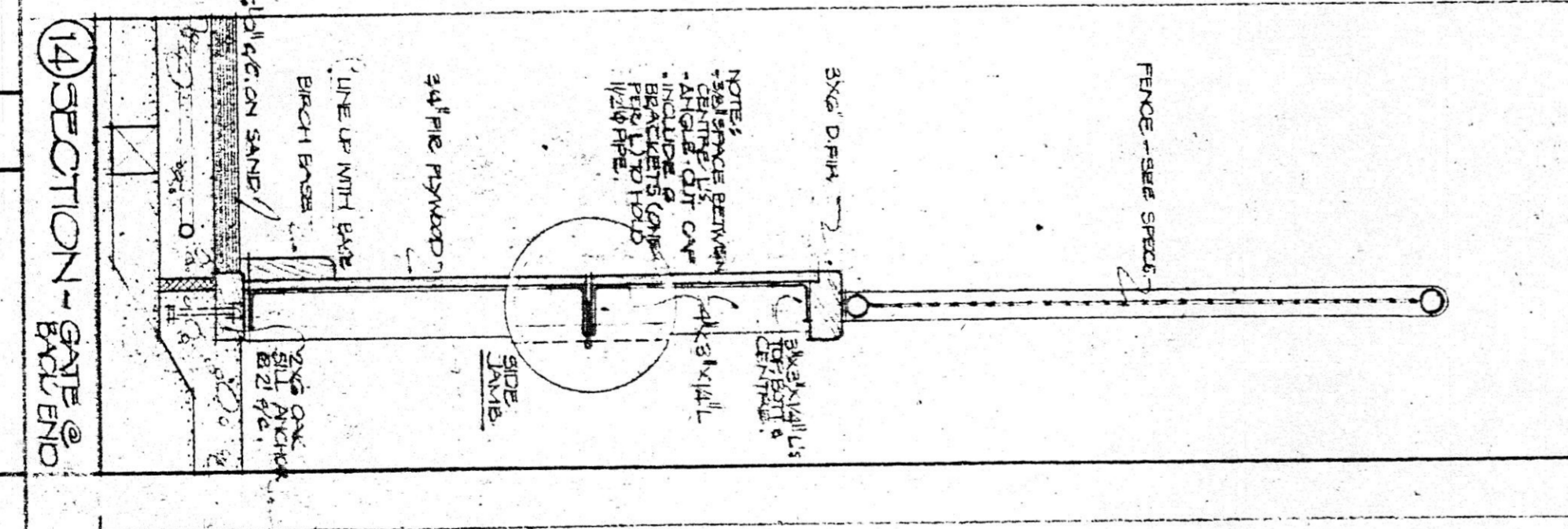
⑨ SECTION - WINDOW



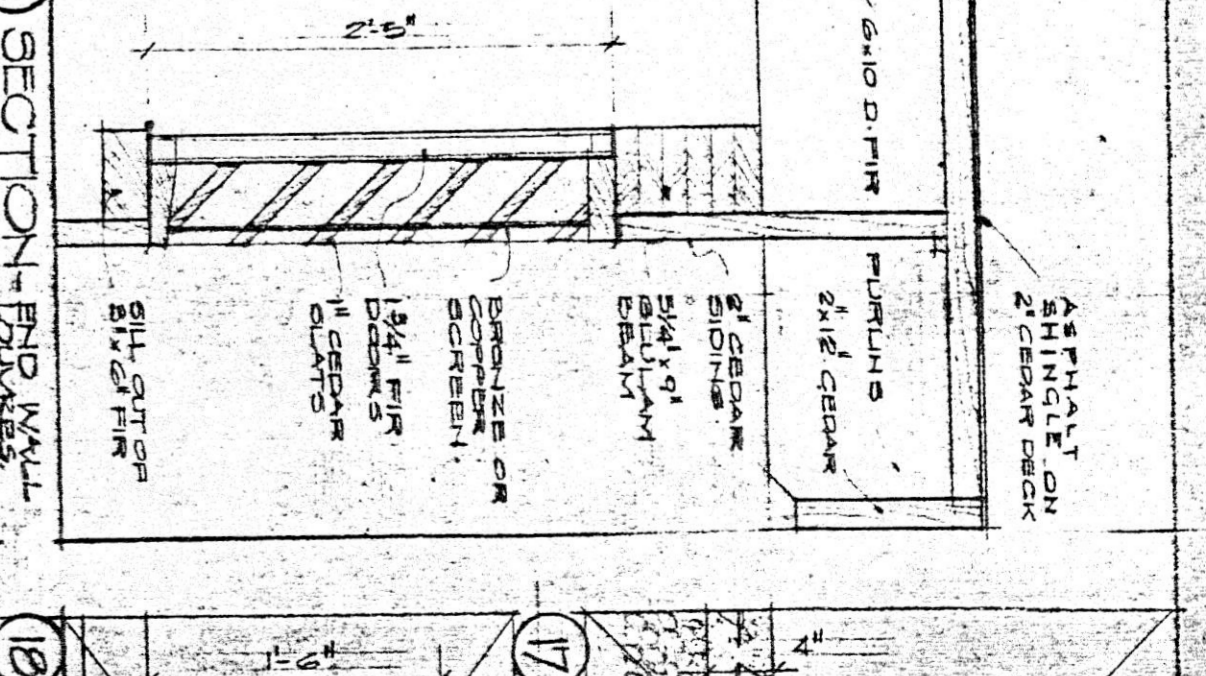
⑩ PLAN - SIDE ENTRANCE



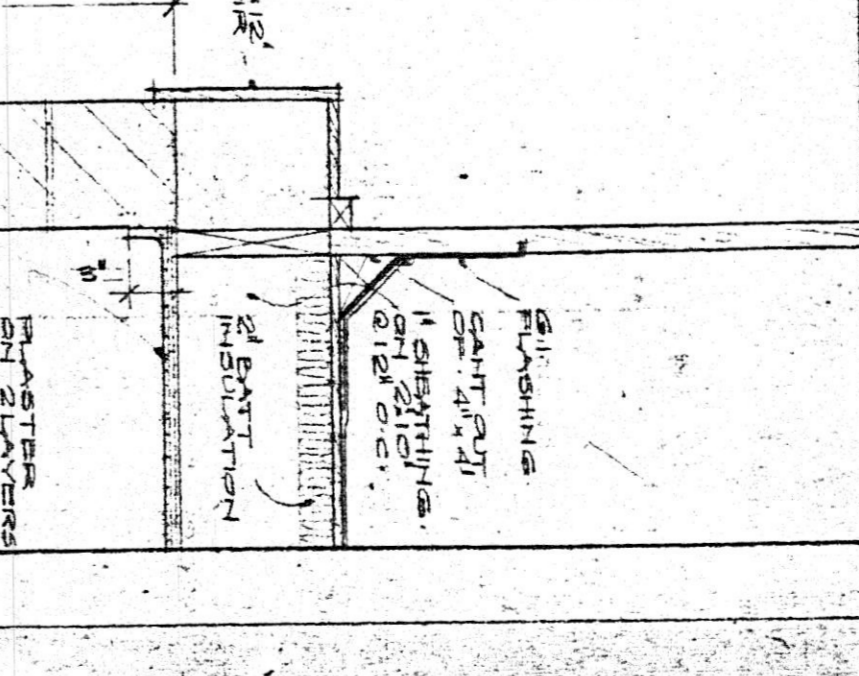
⑪ ELEVATION - WINDOW



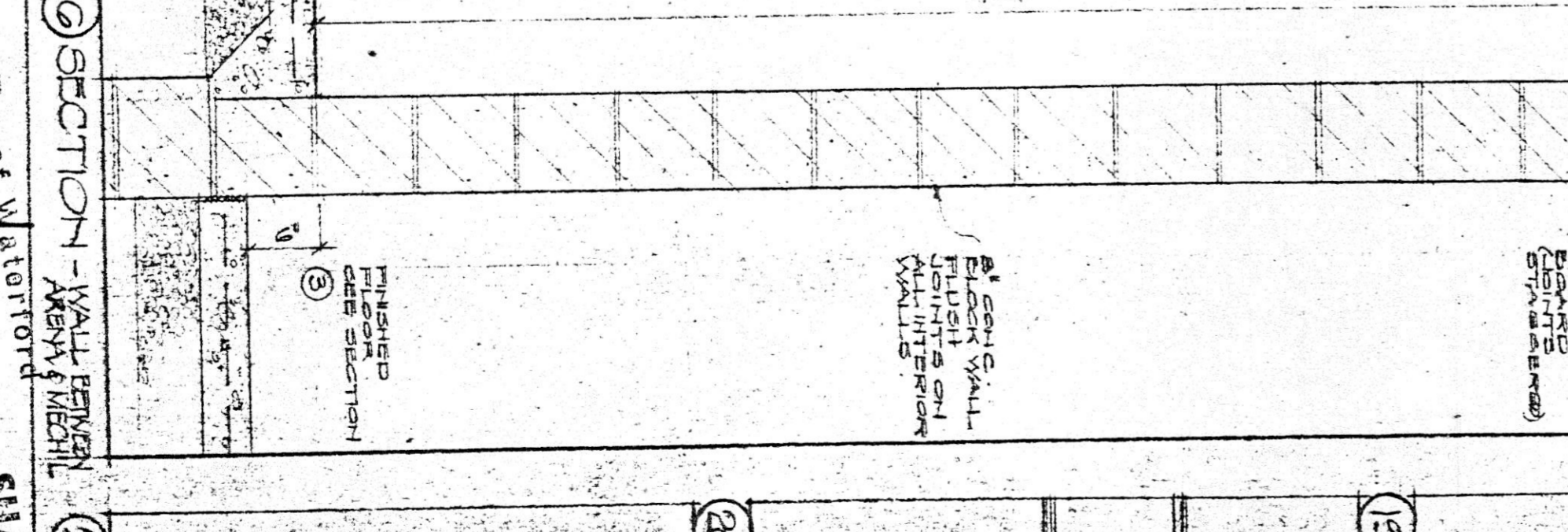
⑫ SECTION - WINDOW



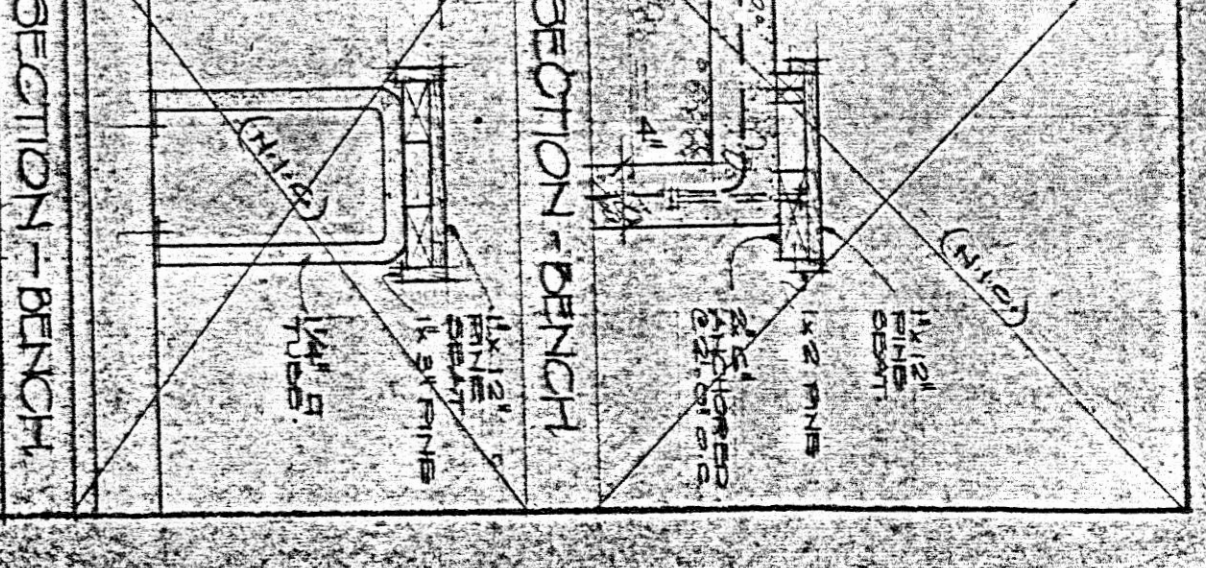
⑬ SECTION - WINDOW



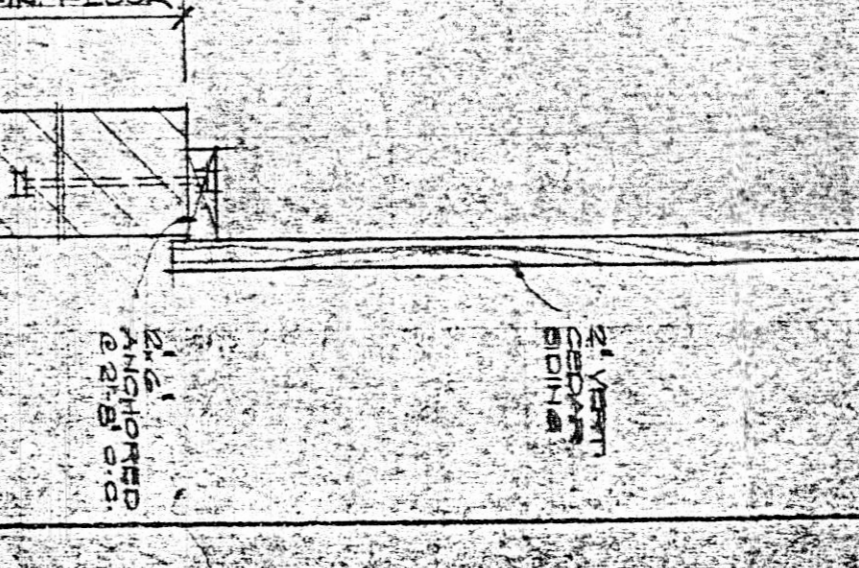
⑭ SECTION - WINDOW



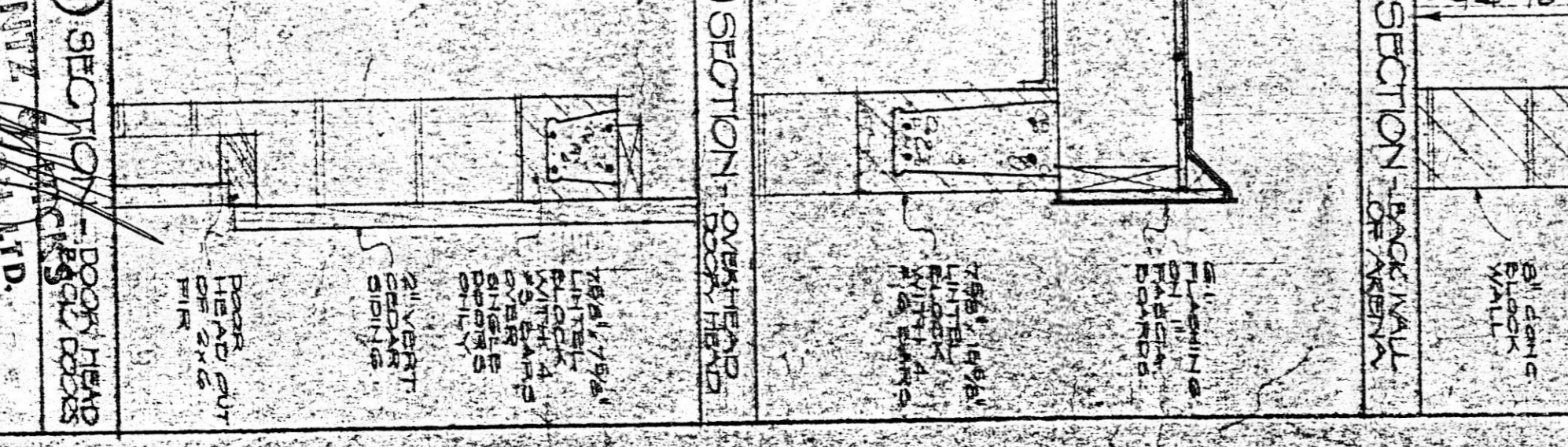
⑮ SECTION - WINDOW



⑯ SECTION - WINDOW



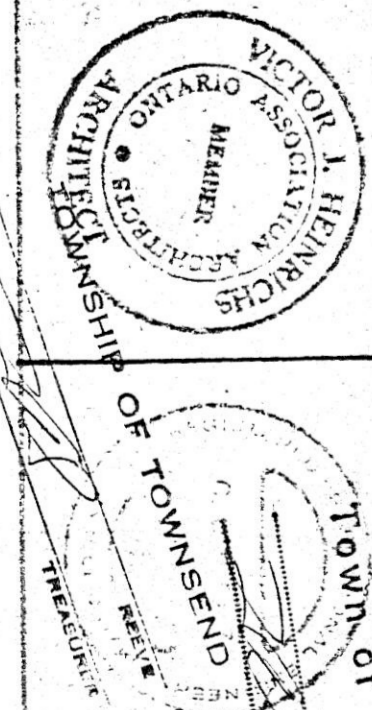
⑰ SECTION - WINDOW



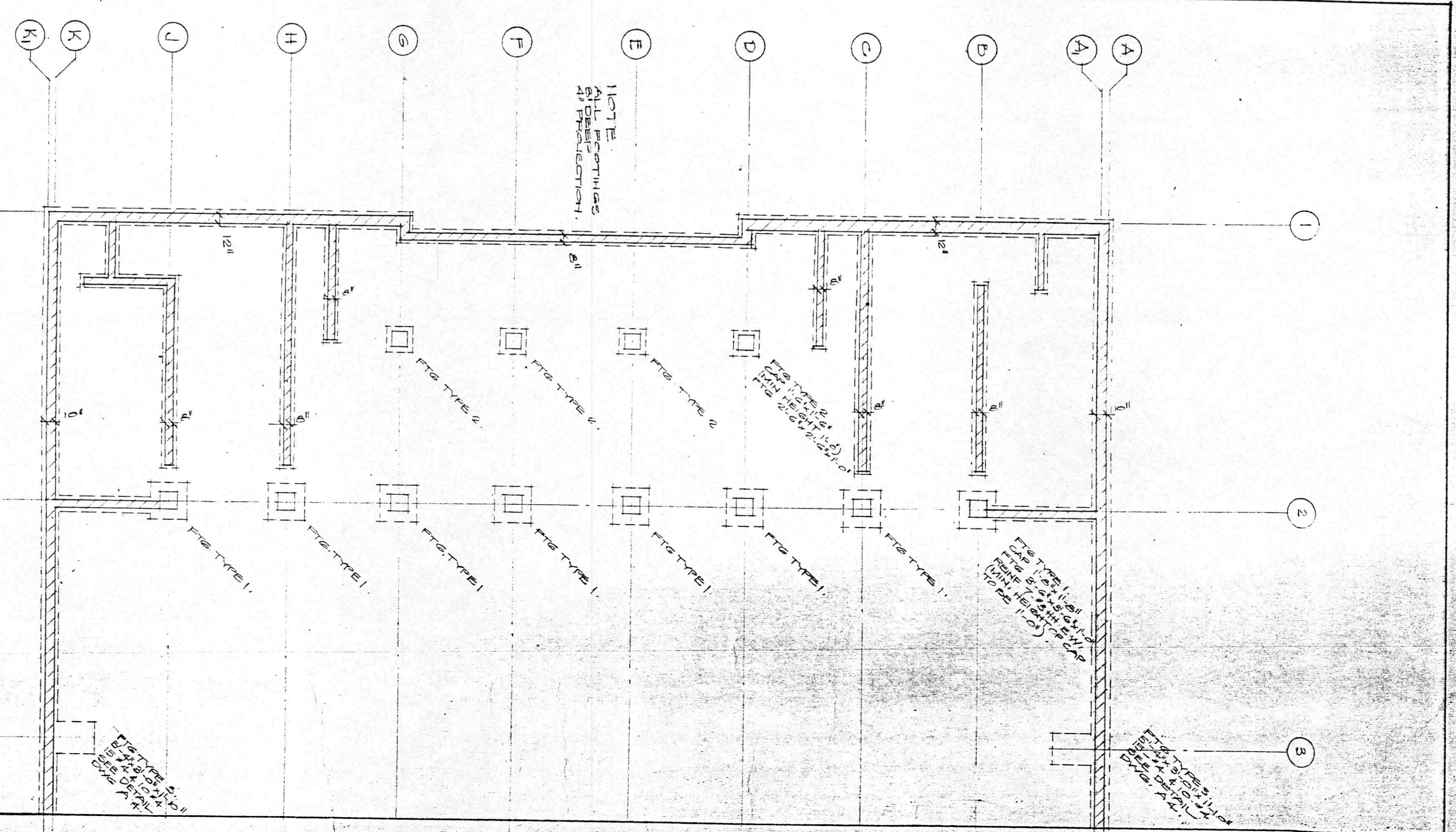
⑱ SECTION - WINDOW

" TRI-CENTURENA " ARENA, WATERFORD, ONTARIO.

DATE	REVISION	NO.	DESCRIPTION
MAR 26 1966	1	1	GENERAL REVISION
MAR 26 1966	2	2	GENERAL REVISION
MAR 26 1966	3	3	GENERAL REVISION



L.C. BAEHORZ & ASSOCIATES LTD.
575 BLOOR STREET EAST
TORONTO, ONTARIO

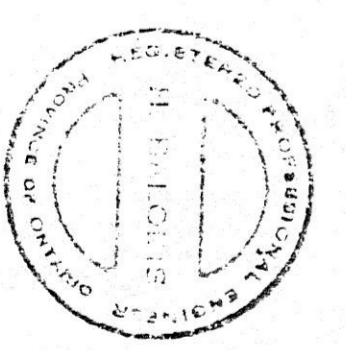


- NOTES:
1. THE ASSUMED SOIL VALUE IS 3000 LBS/SQ.FT. (15 TONS).
 2. ALL EXTERIOR FOOTINGS TO BE CARRIED DOWN TO A MIN. OF 4' ON BELOW FINISHED GRADE AND AT LEAST 12" INTO SUBSTRATE. A PRELIMINARY SOIL TEST (15 TONS) PER FOOTING IS EXPECTED TO PRECEDE ANY DURING CONSTRUCTION. THE LINE OF SETTLED FOOTINGS SHALL NOT EXCEED A RISE OF 7/16" PER 10' MAXIMUM STEP APPROX. 4" OIL

TOWNSHIP OF TOWNSEND, own of Waterford

SHAWNEE CONSULTANTS LTD.
 CONSULTING ENGINEERS
 1545 BAYVIEW RD. UNIT 101
 WILLOWDALE, ONTARIO M2H 3L4

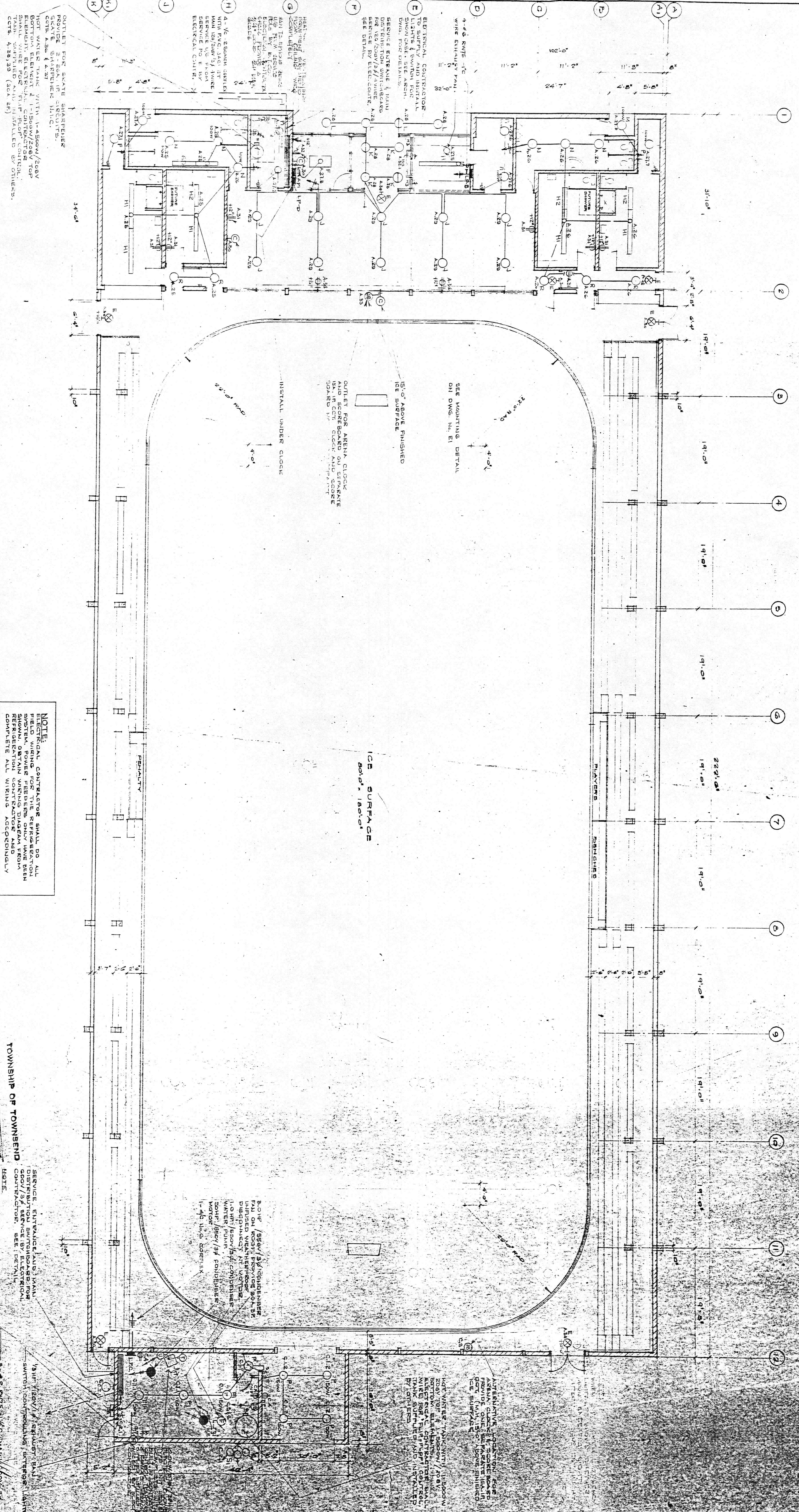
TRI-CENTURINA AREA
 WATERFORD, ONTARIO



L.S. BACHOPF & ASSOCIATES LTD.
 575 BLOOR ST. E. TORONTO
 MAY 24/86
 SCALE 1/8"=1'-0"

MAY 24 1986

" TRI-CENTURENA " ARENA, WATERFORD, ONTARIO.



OUTLET FOR SKATE SHARPENER
SKATE SHARPENER
CCTB. A23 & A27
HOT WATER TANK WITH 1-1/2\"/>

NOTE:
ELECTRICAL CONTRACTOR SHALL DO ALL
FIELD WIRING FOR THE REFRIGERATION
SYSTEM. OBTAIN WIRING DIAGRAM FROM
REFRIGERATION CONTRACTOR AND
COMPLETE ALL WIRING ACCORDINGLY.

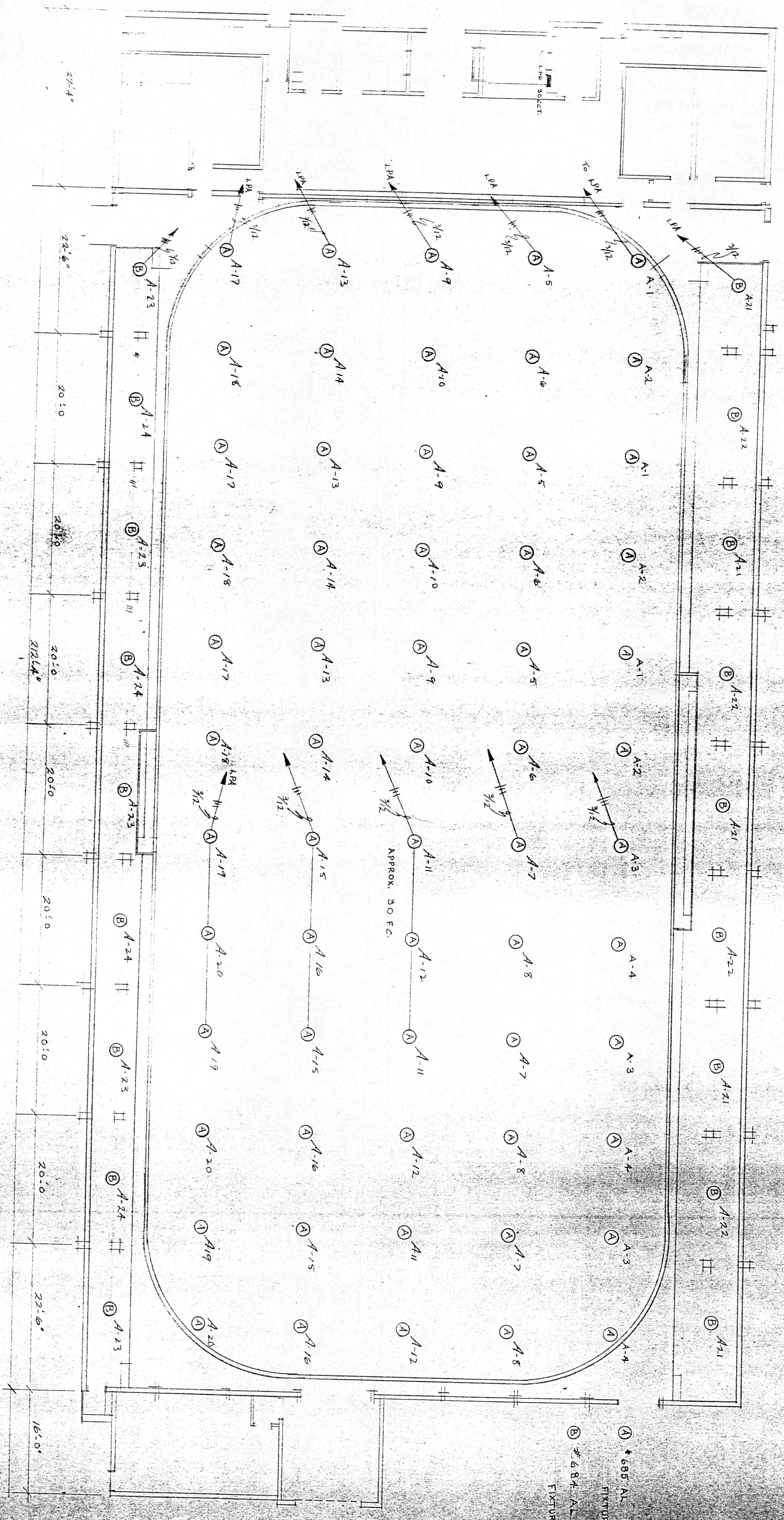
TOWNSHIP OF TOWNSEND
NOTE:
SERVICE ENTRANCE AND MAIN
DISTRIBUTION SWITCHES FOR
CONTRACTOR. SEE DETAIL.

NOTE:
FOR ARENA LIGHTING SEE SUBCONTRACTORS
DRAWING. WIRING FIXTURES SEE
APPENDIX 25
Town of Waterford

DATE	REVISIONS	NO.
MAR 27/66	PIPE ACTIVITY & ENERGY TIGHTENING DETEILED	1
MAR 17/66	MECHANICAL EXHAUST & MAINS	2
MAR 7/66	EXHAUST FAN ADDED	3
MAR 7/66	HEATING & VENTILATING EQUIP. (H.V.A.C.)	4

A. H. BANANI REGISTERED PROFESSIONAL ENGINEER TORONTO 18, ONTARIO	
L. C. BACHORZ & ASSOCIATES LIMITED ELECTRICAL 575 BLOOM STREET EAST TORONTO DATE: FEB. 1966 SCALE: 1/8" = 1'-0" DRAWN: J.O.B. NO. 571 S.D. E-2	

ELECTRICAL LAYOUT FOR WATERFORD ARENA



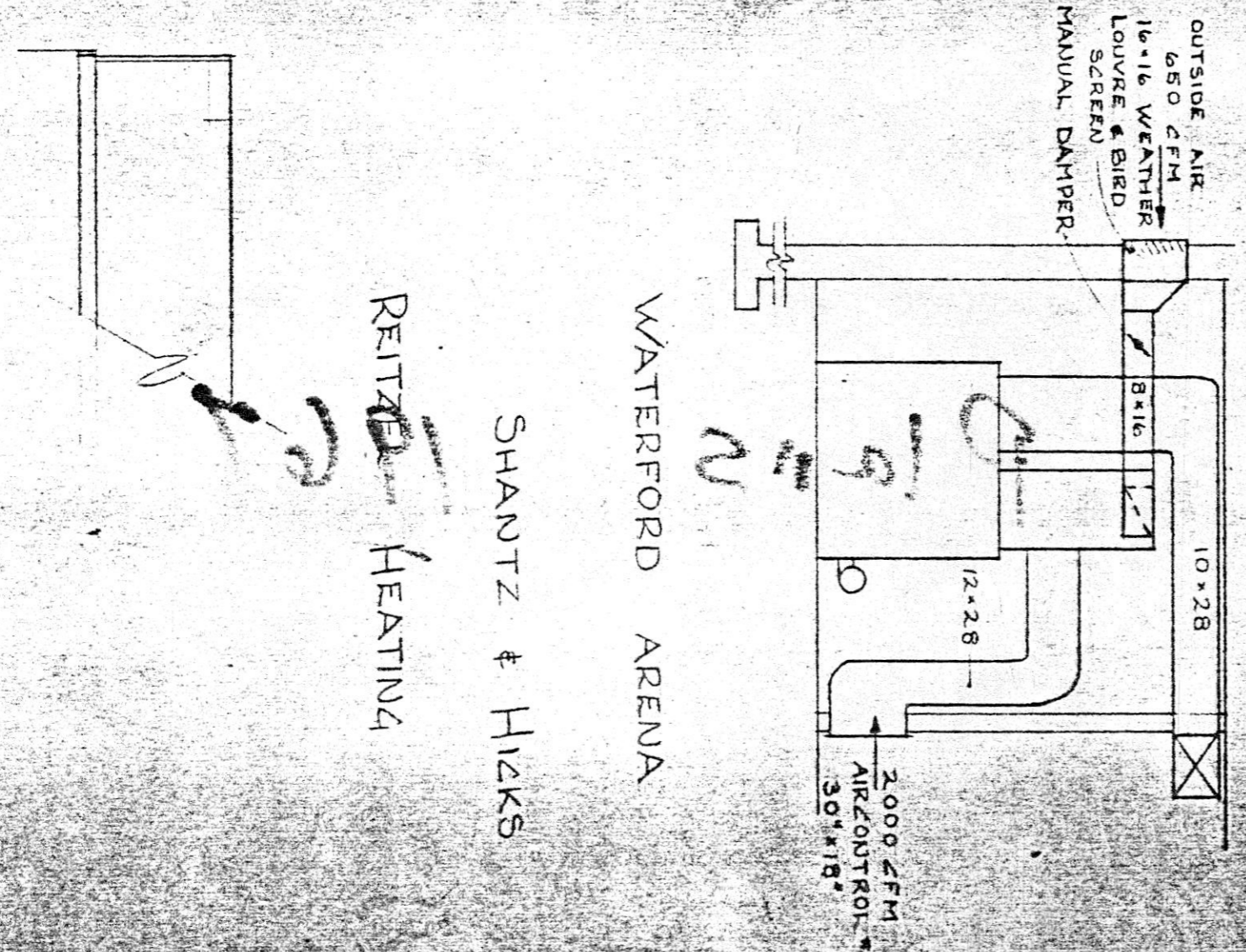
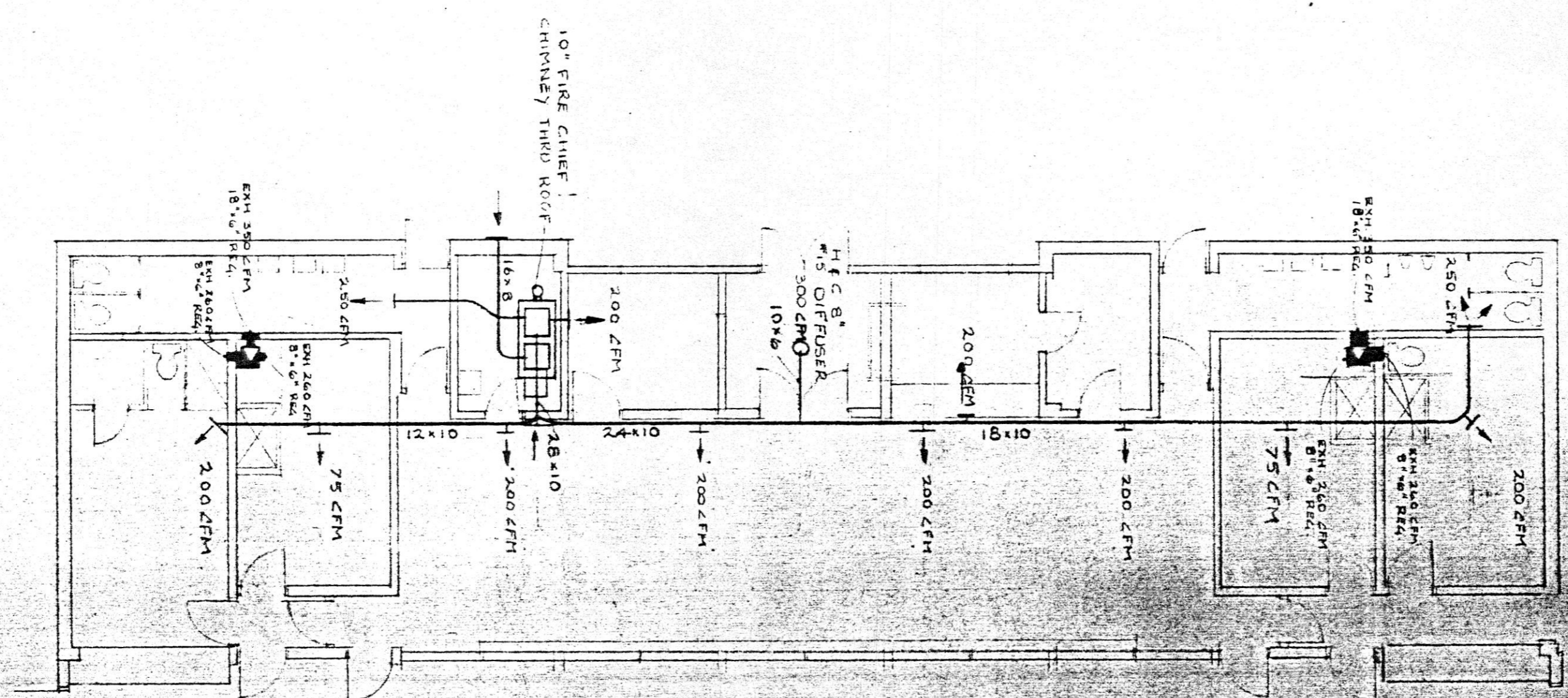
SCALE: 1/8" = 1'-0"

SHAUTZ & HILKS
CONSTRUCTION LIMITED
WATERLOO

ALL ITEMS ON THIS DRAWING TO SUPERSEDE THOSE OF DWG. E-2 Town of Waterford
BY A.H. BHABHI CONSULTING ENGINEER.
MAY 13, 1966

TOWNSHIP OF TOWNSEND
MAYOR
Treasurer
SHAUTZ & HILKS
CONSTRUCTION LIMITED
WATERLOO

① * 685 AL. HOLOPHANE
FIXTURE 1/60W
② * 684 AL. HOLOPHANE
FIXTURE 1/200 W



SUPPLY GRILLES TO AIRCONTROL #201
 250 CFM
 200 CFM
 150 CFM
 75 CFM
 EXHAUST GRILLES TO AIRCONTROL #201

OUTSIDE AIR
 16" I.D. VENT
 16" I.D. VENT
 SCREEN
 MANUAL DAMPER

WATERFORD ARENA

SHANTZ & HICKS

REVERSED HEATING

REVERSED HEATING LAYOUT
AS PER MAY 4, 1966

TOWNSHIP OF TOWNSEND

Town of Waterford

SHANTZ & HICKS
 CONSULTING ENGINEERS
 24 BRIDLEWOOD
 WATERLOO, ONTARIO

REVERSED HEATING LAYOUT
 AS PER MAY 4, 1966