

2021 Census

Population & Dwellings

67.5

thousand people
live in Norfolk
County in 2021

Waterford's
population grew
14.4%
since 2016

8.1%

of Port Dover's dwellings
are unoccupied

54%

of Norfolk County's
population lives in its 6
urban centers

Norfolk County
grew
5.4%
Since 2016

NORFOLK COUNTY POPULATION



1996



2001



2006



2011



2016



2021

Importance of Geographies

Census data is provided in various different geography levels including population centers (Port Dover, Simcoe, Delhi and Waterford), dissemination areas, and dissemination blocks (smallest geography level offered). None of these geographies in past census data releases have matched Norfolk County's urban area boundaries. Previously staff have had to attempt to calculate urban area populations through a system of counting dwellings for geography units which are not wholly contained in an urban area. Norfolk County GIS staff have worked with Statistics Canada to change the boundaries of dissemination areas and dissemination blocks to match Norfolk County's actual urban area boundaries. The 2021 census is the first year that truly precise numbers can be generated for urban areas.

NET CHANGE IN DWELLINGS



2001-2006



2006-2011

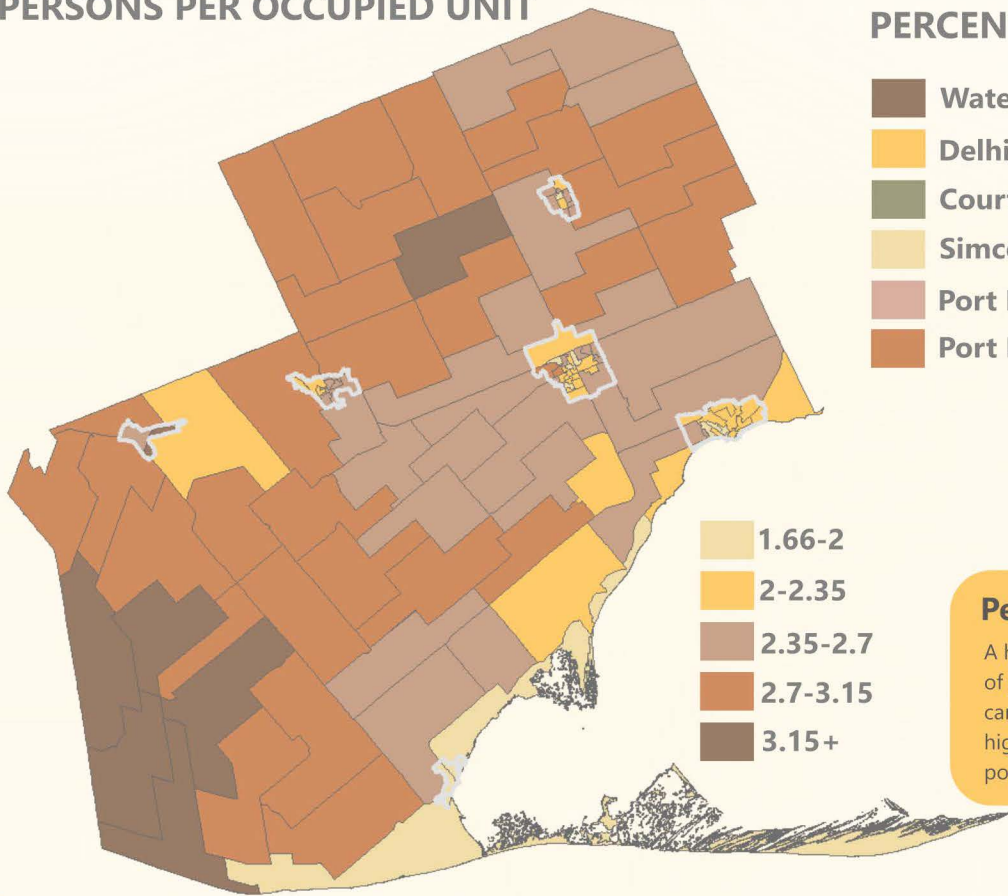


2011-2016

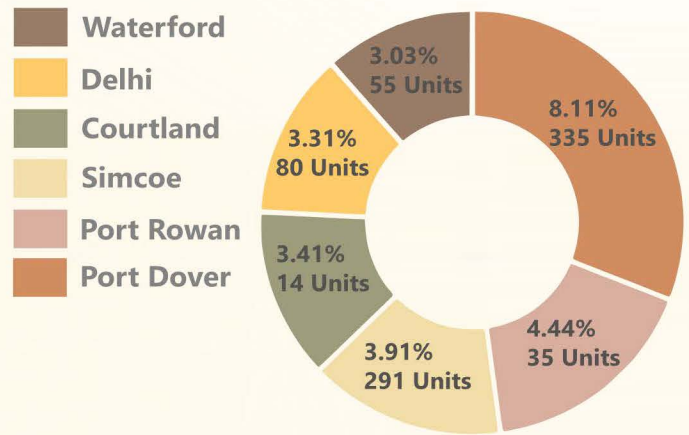


2016-2021

PERSONS PER OCCUPIED UNIT



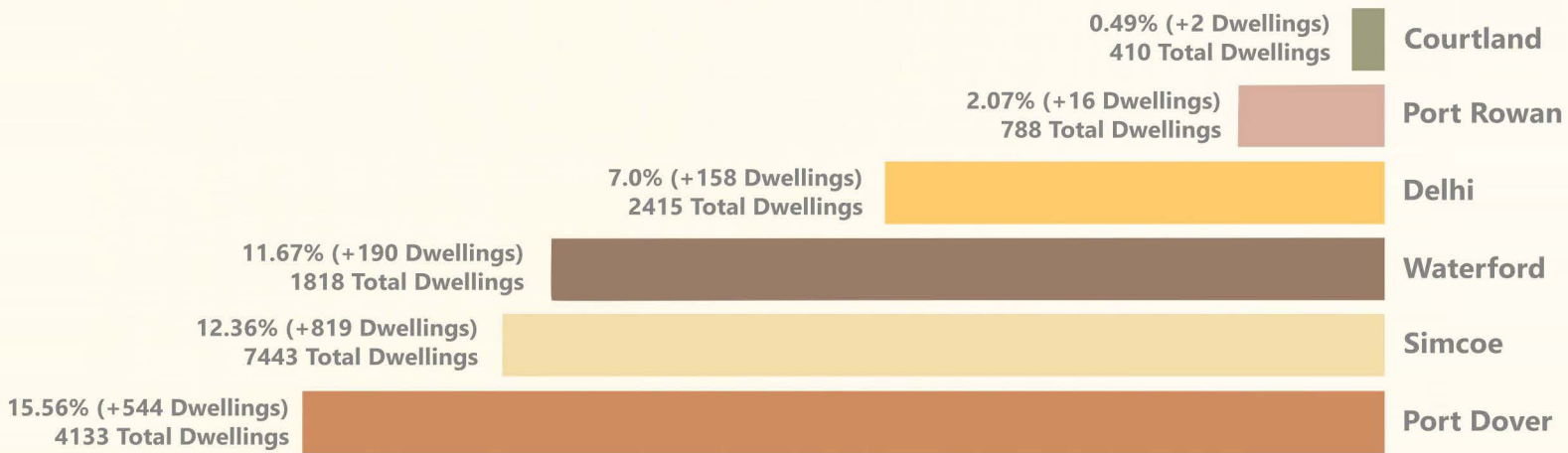
PERCENTAGE OF UNOCCUPIED UNITS



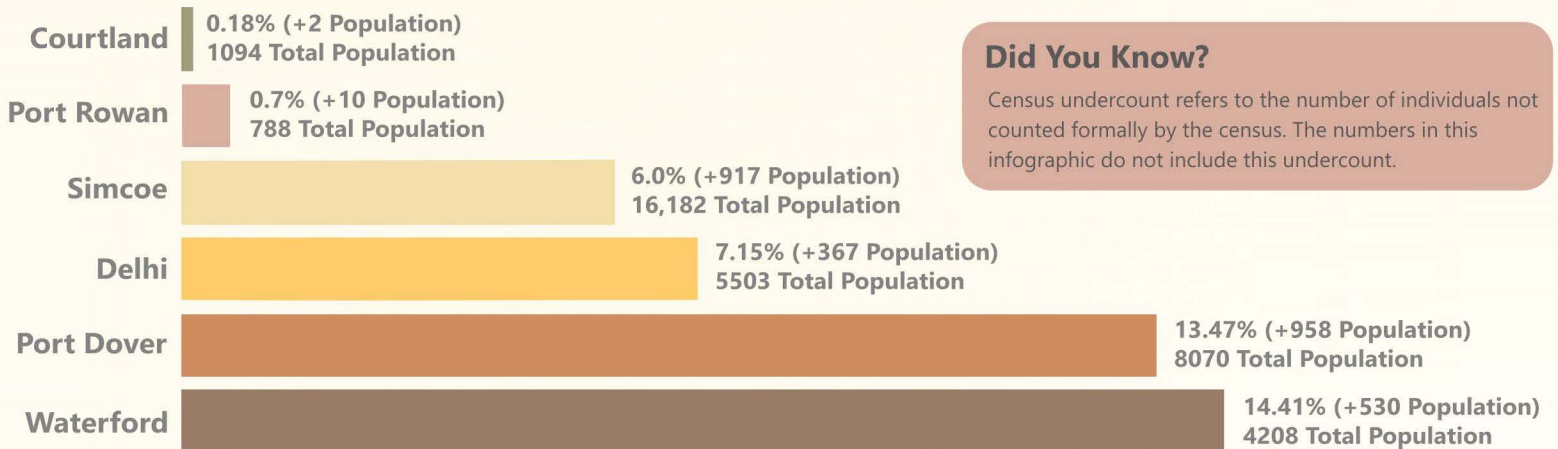
Persons Per Occupied Unit

A higher persons per unit (PPU) can indicate the presence of younger families and lower density housing. Lower PPU can indicate the presence of an older population and higher density housing (apartments have a lower population compared to single family detached dwellings).

PERCENTAGE CHANGES - DWELLINGS



PERCENTAGE CHANGE- POPULATION



Did You Know?

Census undercount refers to the number of individuals not counted formally by the census. The numbers in this infographic do not include this undercount.