

Regional Comparison by Industry

Comparing Agriculture, forestry, fishing and hunting across 10 Regions

Emsi Q3 2017 Data Set

May 2018



Parameters

Industries

Code	Description
11	Agriculture, forestry, fishing and hunting

Region

Code	Description	Level
3528052	Norfolk County	CSD
3529	Brant	CD
3536	Chatham-Kent	CD
3534	Elgin	CD
3528018	Haldimand County	CSD
3525	Hamilton	CD
3539	Middlesex	CD
3526	Niagara	CD
3532	Oxford	CD
3530	Waterloo	CD

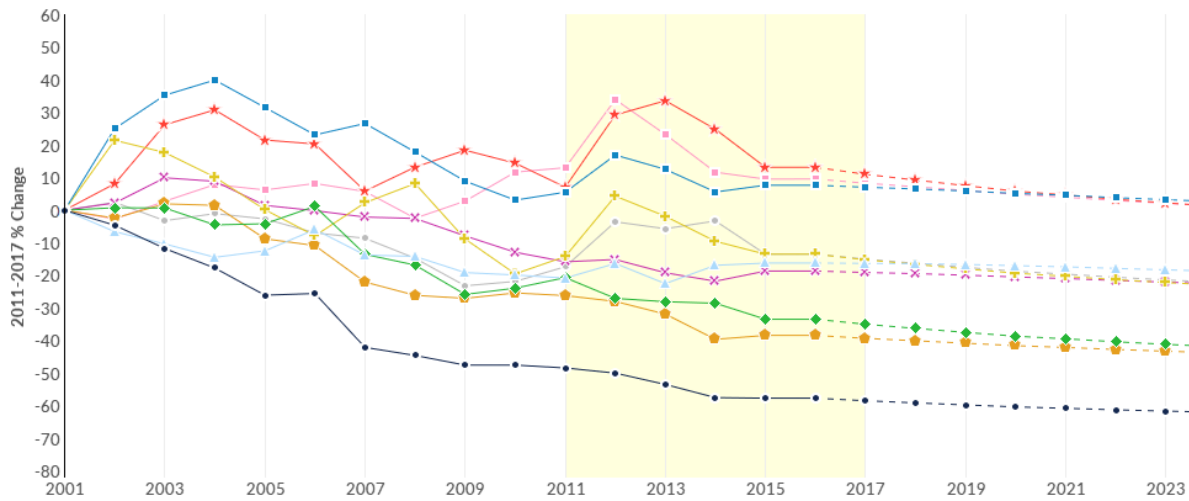
Timeframe

2011 - 2017

Datarun

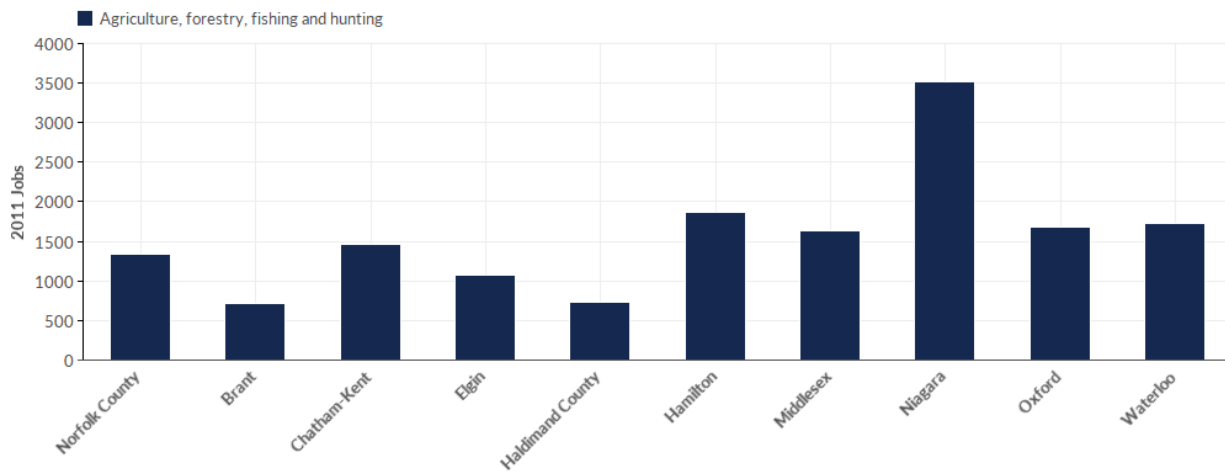
2017.3 - Employees

Industry Change Summary



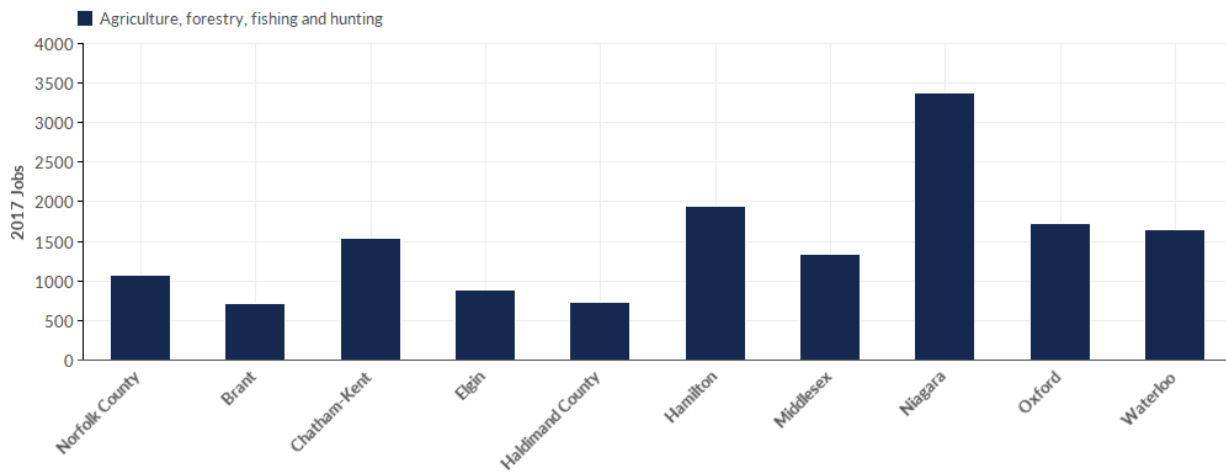
Region	2011 Jobs	2017 Jobs	Change	% Change	2016 Average Wages
● Norfolk County	1,334	1,073	-261	-20%	\$19,372
■ Brant	713	723	10	1%	\$23,249
▲ Chatham-Kent	1,459	1,542	83	6%	\$25,180
◆ Elgin	1,079	884	-195	-18%	\$20,448
⊕ Haldimand County	734	725	-9	-1%	\$18,809
★ Hamilton	1,874	1,943	69	4%	\$22,602
⬠ Middlesex	1,632	1,342	-290	-18%	\$24,108
✖ Niagara	3,521	3,385	-136	-4%	\$21,473
● Oxford	1,684	1,731	47	3%	\$25,097
■ Waterloo	1,722	1,650	-72	-4%	\$26,136

Industry Breakdown - 2011 Jobs



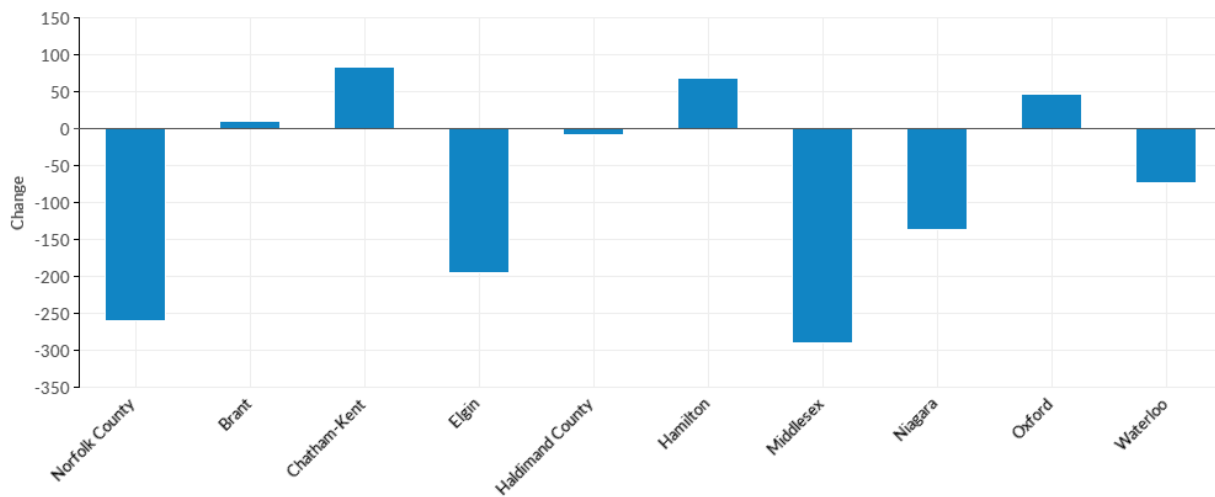
Industry	Description	Norfolk County	Brant	Chatham-Kent	Elgin	Haldimand County	Hamilton	Middlesex	Niagara	Oxford	Waterloo
11	Agriculture, forestry, fishing and hunting	1,334	713	1,459	1,079	734	1,874	1,632	3,521	1,684	1,722
	Total	1,334	713	1,459	1,079	734	1,874	1,632	3,521	1,684	1,722

Industry Breakdown - 2017 Jobs



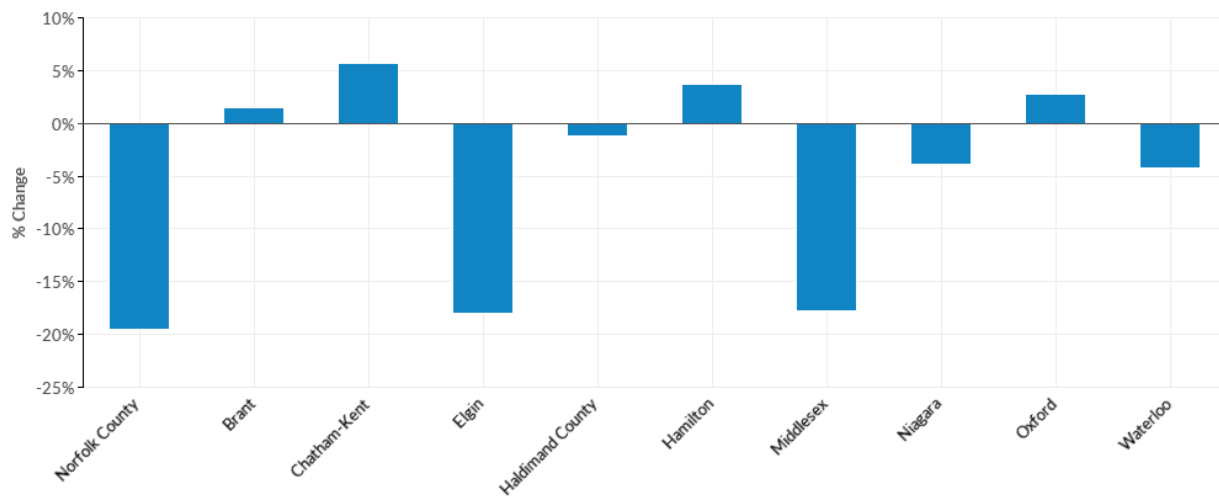
Industry	Description	Norfolk County	Brant	Chatham-Kent	Elgin	Haldimand County	Hamilton	Middlesex	Niagara	Oxford	Waterloo
11	Agriculture, forestry, fishing and hunting	1,073	723	1,542	884	725	1,943	1,342	3,385	1,731	1,650
	Total	1,073	723	1,542	884	725	1,943	1,342	3,385	1,731	1,650

Industry Breakdown - Change



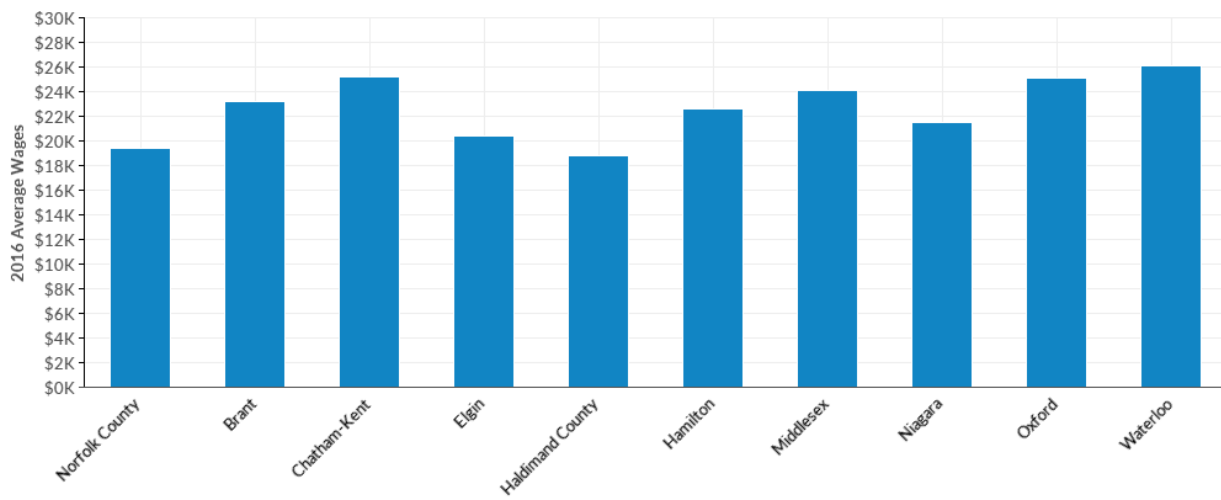
Industry	Description	Norfolk County	Brant	Chatham-Kent	Elgin	Haldimand County	Hamilton	Middlesex	Niagara	Oxford	Waterloo
11	Agriculture, forestry, fishing and hunting	-261	10	83	-195	-9	69	-290	-136	47	-72
	Total	-261	10	83	-195	-9	69	-290	-136	47	-72

Industry Breakdown - % Change



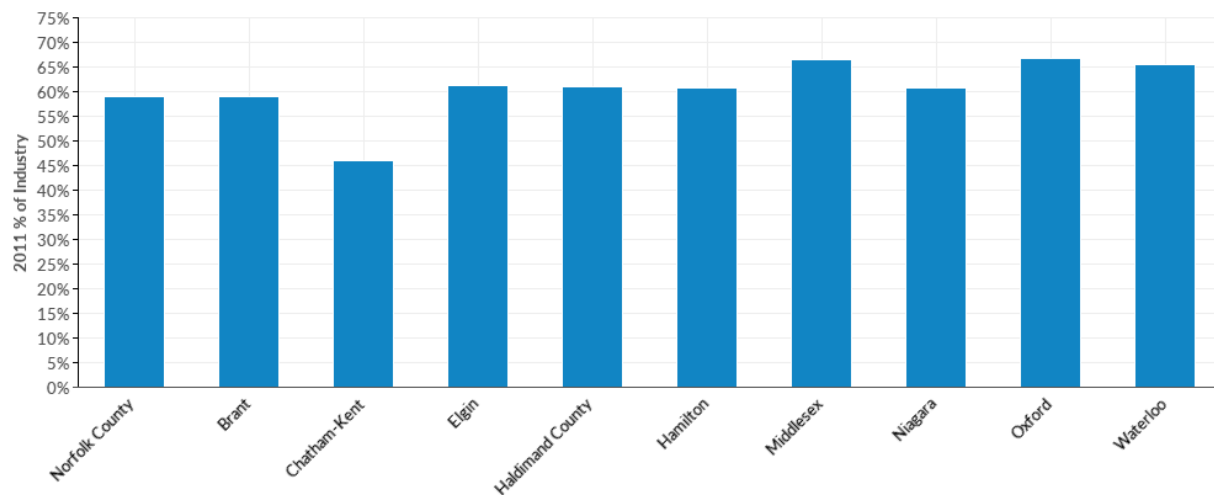
Industry	Description	Norfolk County	Brant	Chatham-Kent	Elgin	Haldimand County	Hamilton	Middlesex	Niagara	Oxford	Waterloo
11	Agriculture, forestry, fishing and hunting	-20%	1%	6%	-18%	-1%	4%	-18%	-4%	3%	-4%
	Total	-20%	1%	6%	-18%	-1%	4%	-18%	-4%	3%	-4%

Industry Breakdown - 2016 Average Wages



Industry	Description	Norfolk County	Brant	Chatham-Kent	Elgin	Haldimand County	Hamilton	Middlesex	Niagara	Oxford	Waterloo
11	Agriculture, forestry, fishing and hunting	\$19,372	\$23,249	\$25,180	\$20,448	\$18,809	\$22,602	\$24,108	\$21,473	\$25,097	\$26,136
	Total	\$19,372	\$23,249	\$25,180	\$20,448	\$18,809	\$22,602	\$24,108	\$21,473	\$25,097	\$26,136

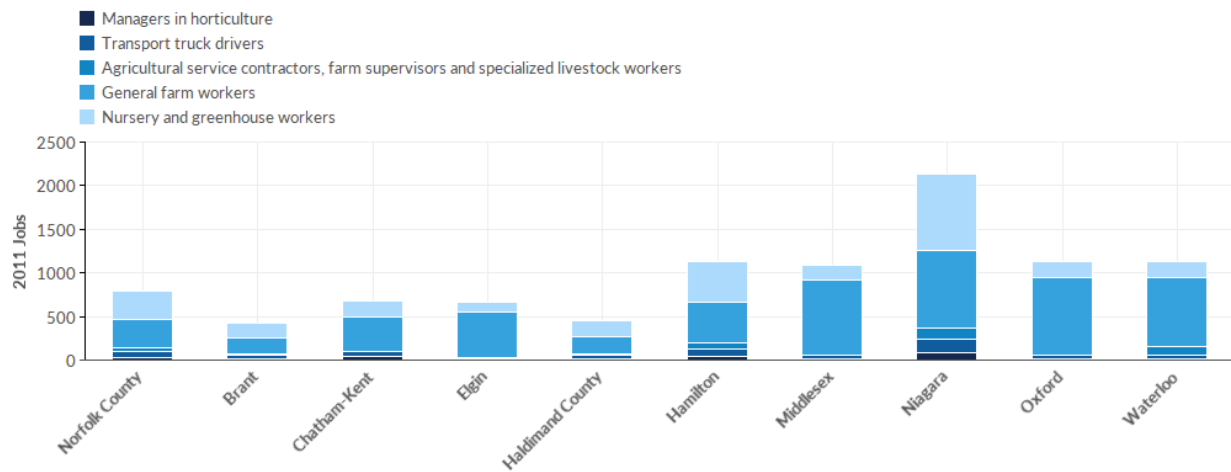
Top Occupations - 2011 % of Industry



NOC Code	Description	Norfolk County	Brant	Chatham-Kent	Elgin	Haldimand County	Hamilton	Middlesex	Niagara	Oxford	Wat
8431	General farm workers	25%	25%	28%	48%	26%	25%	53%	25%	53%	
8432	Nursery and greenhouse workers	24%	24%	12%	10%	25%	25%	11%	25%	11%	
7511	Transport truck drivers	5%	5%	4%	2%	4%	4%	3%	4%	3%	
8252	Agricultural service contractors, farm supervisors and specialized livestock workers	4%	4%	0%	0%	3%	3%	0%	3%	0%	
0822	Managers in horticulture	2%	2%	3%	1%	3%	3%	1%	3%	1%	
	Total	59%	59%	46%	61%	61%	61%	67%	61%	67%	

Source: Employees - Emsi 2017.3

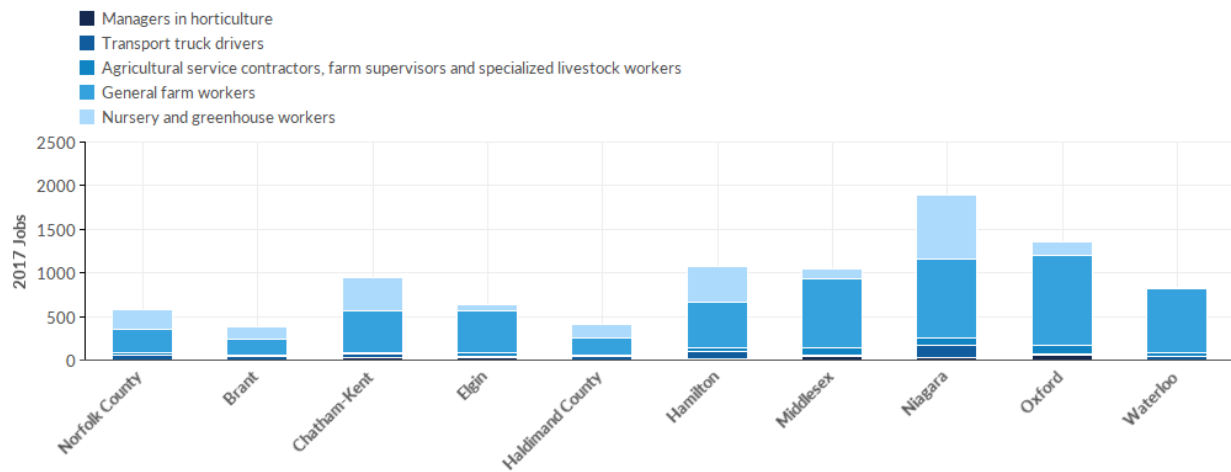
Top Occupations - 2011 Jobs



NOC Code	Description	Norfolk County	Brant	Chatham-Kent	Elgin	Haldimand County	Hamilton	Middlesex	Niagara	Oxford	Wat
8431	General farm workers	327	175	402	520	188	475	858	895	889	
8432	Nursery and greenhouse workers	317	168	171	106	185	466	173	880	180	
7511	Transport truck drivers	62	33	60	27	31	82	42	153	43	
8252	Agricultural service contractors, farm supervisors and specialized livestock workers	48	27	0	0	25	65	0	121	0	
0822	Managers in horticulture	32	17	38	<10	19	48	13	90	14	
	Total	787	420	671	661	448	1,136	1,087	2,140	1,126	

Source: Employees - Emsi 2017.3

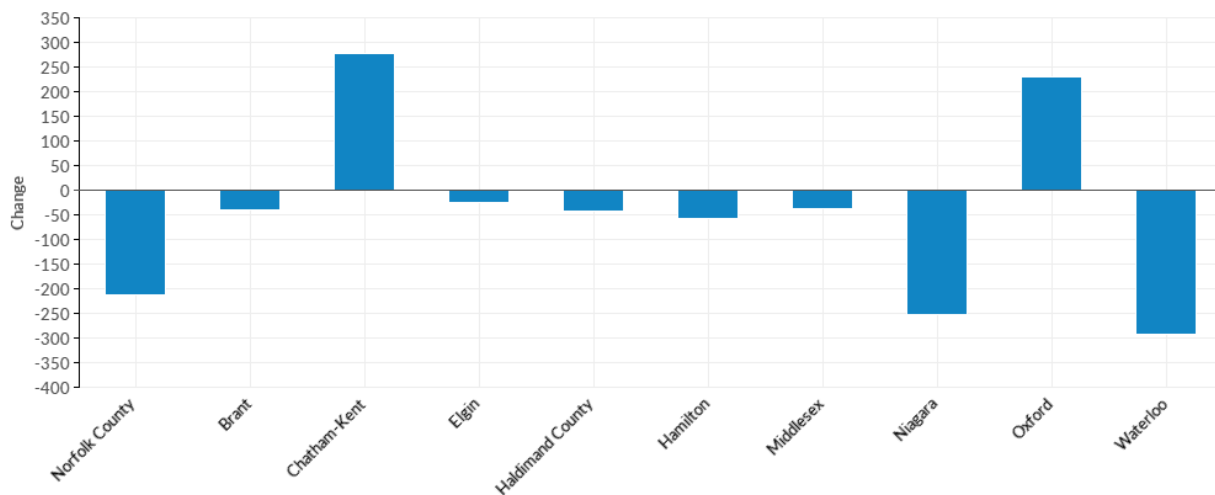
Top Occupations - 2017 Jobs



NOC Code	Description	Norfolk County	Brant	Chatham-Kent	Elgin	Haldimand County	Hamilton	Middlesex	Niagara	Oxford	Wat
8431	General farm workers	274	181	476	479	196	520	789	910	1,023	
8432	Nursery and greenhouse workers	213	140	382	74	157	414	121	727	158	
7511	Transport truck drivers	52	37	44	<10	32	87	11	150	14	
8252	Agricultural service contractors, farm supervisors and specialized livestock workers	27	18	20	46	16	44	85	76	103	
0822	Managers in horticulture	<10	<10	26	27	<10	13	43	23	57	
	Total	573	380	947	635	406	1,078	1,049	1,886	1,355	

Source: Employees - Emsi 2017.3

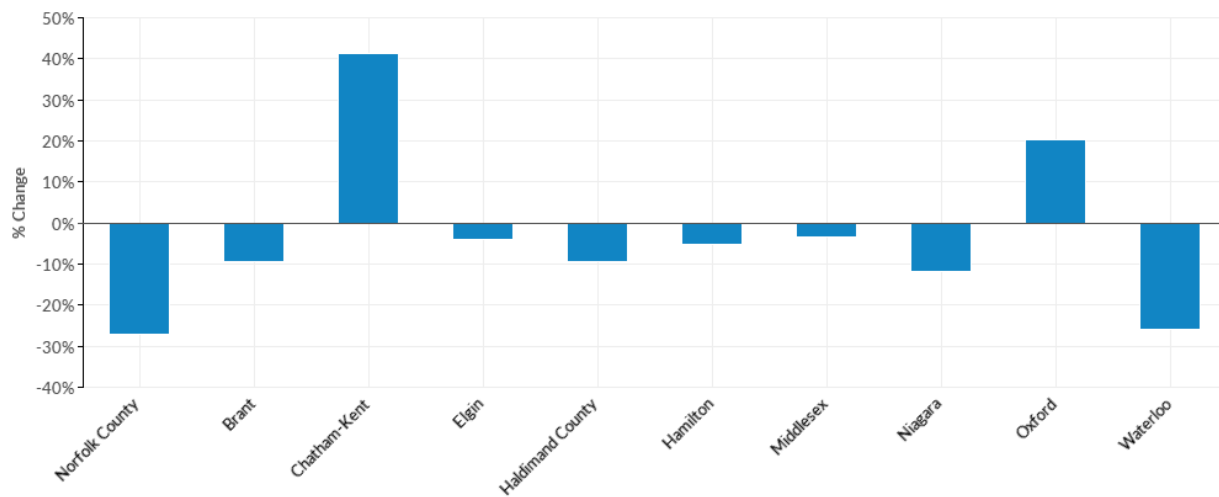
Top Occupations - Change



NOC Code	Description	Norfolk County	Brant	Chatham-Kent	Elgin	Haldimand County	Hamilton	Middlesex	Niagara	Oxford	Wat
7511	Transport truck drivers	-10	4	-16	--	1	5	-31	-3	-29	
8252	Agricultural service contractors, farm supervisors and specialized livestock workers	-21	-9	20	46	-9	-21	85	-45	103	
0822	Managers in horticulture	--	--	-12	--	--	-35	30	-67	43	
8431	General farm workers	-53	6	74	-41	8	45	-69	15	134	
8432	Nursery and greenhouse workers	-104	-28	211	-32	-28	-52	-52	-153	-22	
	Total	-214	-40	276	-26	-42	-58	-38	-254	229	

Source: Employees - Emsi 2017.3

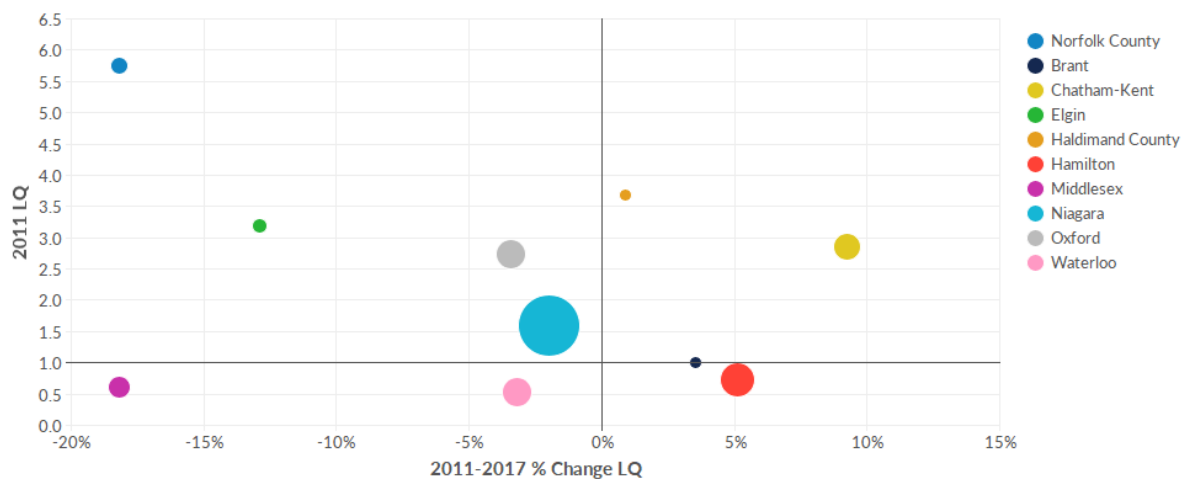
Top Occupations - % Change



NOC Code	Description	Norfolk County	Brant	Chatham-Kent	Elgin	Haldimand County	Hamilton	Middlesex	Niagara	Oxford	Wat
7511	Transport truck drivers	-16%	12%	-27%	--	3%	6%	-74%	-2%	-67%	
8431	General farm workers	-16%	3%	18%	-8%	4%	9%	-8%	2%	15%	
8432	Nursery and greenhouse workers	-33%	-17%	123%	-30%	-15%	-11%	-30%	-17%	-12%	
8252	Agricultural service contractors, farm supervisors and specialized livestock workers	-44%	-33%	--	--	-36%	-32%	--	-37%	--	
0822	Managers in horticulture	--	--	-32%	--	--	-73%	231%	-74%	307%	
	Total	-27%	-10%	41%	-4%	-9%	-5%	-3%	-12%	20%	

Source: Employees - Emsi 2017.3

Location Quotient Breakdown - 2011 National LQ

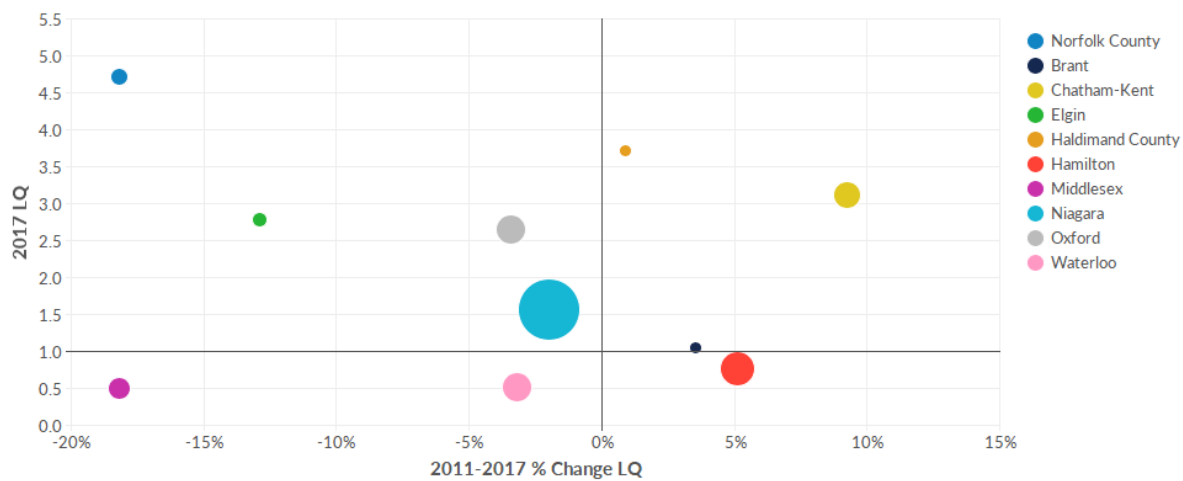


*Bubble size represents 2011 jobs in each region.

Industry	Description	Norfolk County	Brant	Chatham-Kent	Elgin	Haldimand County	Hamilton	Middlesex	Niagara	Oxford	V
11	Agriculture, forestry, fishing and hunting	5.75	1.01	2.86	3.20	3.68	0.73	0.61	1.60	2.75	
	Total	5.75	1.01	2.86	3.20	3.68	0.73	0.61	1.60	2.75	

Source: Employees - Emsi 2017.3

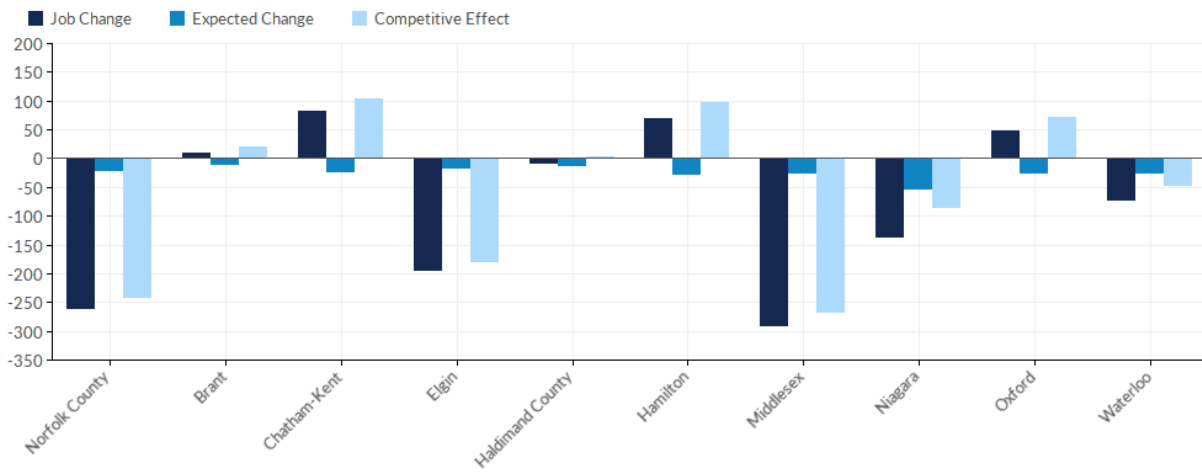
Location Quotient Breakdown - 2017 National LQ



Industry	Description	Norfolk County	Brant	Chatham-Kent	Elgin	Haldimand County	Hamilton	Middlesex	Niagara	Oxford	V
11	Agriculture, forestry, fishing and hunting	4.71	1.05	3.12	2.78	3.71	0.77	0.50	1.57	2.65	
	Total	4.71	1.05	3.12	2.78	3.71	0.77	0.50	1.57	2.65	

Source: Employees - Emsi 2017.3

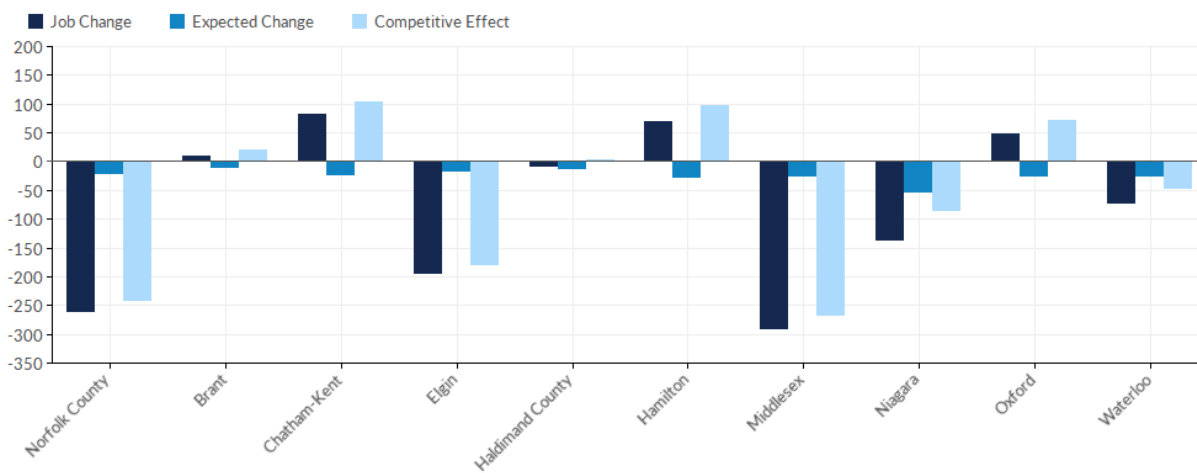
Shift Share Breakdown - Job Change



Industry	Description	Norfolk County	Brant	Chatham-Kent	Elgin	Haldimand County	Hamilton	Middlesex	Niagara	Oxford	V
11	Agriculture, forestry, fishing and hunting	-261	10	83	-195	-9	69	-290	-137	47	
	Total	-261	10	83	-195	-9	69	-290	-137	47	

Source: Employees - Emsi 2017.3

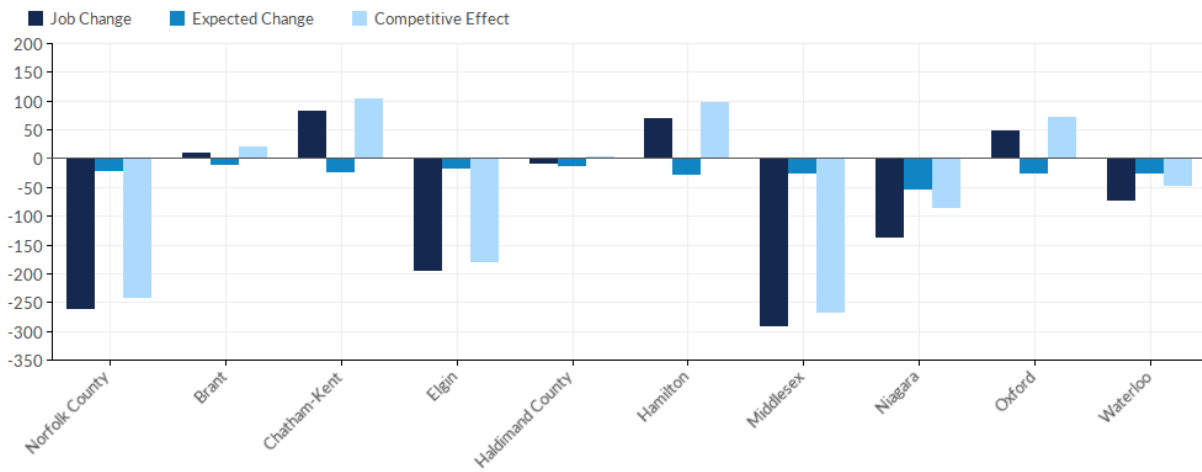
Shift Share Breakdown - Expected Change



Industry	Description	Norfolk County	Brant	Chatham-Kent	Elgin	Haldimand County	Hamilton	Middlesex	Niagara	Oxford	V
11	Agriculture, forestry, fishing and hunting	-20	-11	-22	-16	-11	-28	-24	-52	-25	
	Total	-20	-11	-22	-16	-11	-28	-24	-52	-25	

Source: Employees - Emsi 2017.3

Shift Share Breakdown - Competitive Effect



Industry	Description	Norfolk County	Brant	Chatham-Kent	Elgin	Haldimand County	Hamilton	Middlesex	Niagara	Oxford	V
11	Agriculture, forestry, fishing and hunting	-241	21	105	-179	2	97	-266	-85	72	
	Total	-241	21	105	-179	2	97	-266	-85	72	

Source: Employees - Emsi 2017.3

Appendix A - Data Sources and Calculations

Industry Data

In order to capture a complete picture of industry employment, Emsi combines employment data from Survey of Employment, Payrolls and Hours (SEPH) with data from the Labour Force Survey (LFS), Census, and Canadian Business Patterns (CBP) to form detailed geographic estimates of employment. Projections are based on the latest available Emsi industry data, 10-year past local trends in each industry and growth rates from national industry projections from the Canadian Occupational Projection System (COPS) produced by Human Resources and Skills Development Canada.

Staffing Patterns Data

The staffing patterns data in this report is compiled from several sources using a specialized process. Sources include the Labour Force Survey (LFS) and the Census. Emsi uses ratios from the Census and inputs regional jobs by industry, converting these to jobs by occupation. The ratios derived from this are adjusted to equal actual regional data, resulting in a unique regional staffing pattern.